



Commercial foodservice water filtration products and accessories

2025

Catalog

Effective August 1, 2025



Solventum commercial foodservice water filtration products and accessories

Contents

Ice 3

Coffee and Hot Tea Brewing 5

Espresso 6

Cold Beverage 8

Drinking Water 9

Multi-Equipment 10

Reverse Osmosis 12

Calcite Feeder 14

Steamers & Steam Tables 14

Water Treatment 15

Heads, Manifolds, & Flush Kits 16

Drop-In Style Filtration 18

Office Water & Coffee (OCS) 19

Replacement Cartridges for Discontinued 8000 Series Systems 20

Competitive Retrofit Cartridges 21

Spare Parts 22

Product List by Model Number 24

Product List by Part Number 31



Carbon Filters

Model No.	Part No.	Micron	Flow Rate (GPM)	Capacity (Gal)	Connection	Replacement Cartridge	Reduction Claims							Case Qty
							Particulate	Chlorine, Taste & Odor	Chloramines	Cyst*	Scale**	Bacteria***	Microplastics	
ICE120-S	5616003	0.5	1.5	9,000	3/8" NPT	HF20-S	●	●		●	●		●	6
ICE120-SI	5616018	0.2	1.67	14,000	3/8" NPT	HF20-SI	●	●		●	●	●	●	6
ICE125-S	5616004	1	1.5	10,000	3/8" NPT	HF25-S	●	●			●			6
ICE140-S	5616203	0.2	2.5	25,000	3/8" NPT	HF40-S	●	●		●	●	●	●	2
ICE145-S	5616204	3	2.1	25,000	3/8" NPT	HF45-S	●	●			●			2
ICE160-S	5616303	0.2	3.34	35,000	1/2" NPT	HF60-S	●	●		●	●	●	●	1
ICE165-S	5616304	3	3.34	35,000	1/2" NPT	HF65-S	●	●			●			1
ICE190-S	5616403	0.2	5	54,000	1/2" NPT	HF90-S	●	●		●	●	●	●	1
ICE195-S	5616404	3	5	54,000	1/2" NPT	HF95-S	●	●			●			1
ICE260-S	5624503	0.2	6.68	70,000	3/4" NPT	(2) HF60-S	●	●		●	●	●	●	1
ICE265-S	5624504	3	6.68	70,000	3/4" NPT	(2) HF65-S	●	●			●			1



ICE120 Series



ICE140 Series



ICE160 Series



ICE190 Series



ICE260 Series

* Based on testing using *Cryptosporidium parvum* oocysts.

** As tested and verified by manufacturer's laboratory.

*** Reduction of water-borne bacteria as demonstrated with 99.99% reduction of surrogate organism *E. coli* (ATCC 11229) and *P. fluorescens* (ATCC 49642) in manufacturer's lab test.

Carbonless Filters

Maintain chlorine levels to help protect against biofilm buildup
(Absolute rated support ASHRAE 188 water management plans)

Model No.	Part No.	Micron	Flow Rate (GPM)	Capacity (Gal)	Connection	Replacement Cartridge	Reduction Claims						Case Qty	
							Particulate	Chlorine, Taste & Odor	Chloramines	Cyst*	Scale**	Bacteria***,****		Microplastics
ICE120-A020-S-SR	5616015	0.2 Absolute	2	N/A	3/8" NPT	HF20-A020-S-SR	●			●	●	●	●	6
ICE120-S-SR	5616016	0.2 Nominal	2	N/A	3/8" NPT	HF20-S-SR	●			●	●	●	●	6
ICE160-A020-S-SR	5616335	0.2 Absolute	3.5	N/A	1/2" NPT	HF60-A020-S-SR	●			●	●	●	●	1
ICE160-S-SR	5616336	0.2 Nominal	3.5	N/A	1/2" NPT	HF60-S-SR	●			●	●	●	●	1

Carbon Filter Sizing Guide

Commercial ice machine size - up to lbs. / day
(Sizing for 6-month cartridge change)

Model	Cuber	Flaker & Nugget
ICE120-S	750	1,200
ICE120-SI		
ICE125-S		
ICE140-S	1,000	1,800
ICE145-S		
ICE160-S	1,450	2,400
ICE165-S		
ICE190-S	2,170	3,593
ICE195-S		
ICE260-S	2,900	4,800
ICE265-S		

Carbonless Filter Sizing Guide

Commercial ice machine size - up to lbs. / day
(Sizing for 6-month cartridge change)

Model	Cuber	Flaker & Nugget
ICE120-A020-S-SR	500	
ICE120-S-SR		
ICE160-A020-S-SR	1,000	
ICE160-S-SR	1,600	

* Based on testing using *Cryptosporidium parvum* oocysts.

** As tested and verified by manufacturer's laboratory.

*** Reduction of water-borne bacteria as demonstrated with 99.99% reduction of surrogate organism E. coli (ATCC 11229) and P. fluorescens (ATCC 49642) in manufacturer's lab test.

**** Carbonless Absolute rated filters - Reduction of water-borne bacteria as demonstrated with 99.9999% reduction of surrogate organism E. coli (ATCC 11229), P. fluorescens (ATCC 49642), *legionella pneumophila* and *brevundimonas diminuta* in a manufacturer's lab test.

Coffee and Hot Tea Brewing

Model No.	Part No.	Micron	Flow Rate (GPM)*	Capacity (Gal)*	Connection	Replacement Cartridge	Reduction Claims							Case Qty
							Particulate	Chlorine, Taste & Odor	Chloramines	Cyst***	Scale**	Bacteria****	Microplastics	
BREW110-MS	5626203	0.5	1	3,500	3/8" NPT	HF10-MS	●	●		●	●		●	6
BREW115-MS	5626204	5	1	3,500	3/8" NPT	HF15-MS	●	●			●			6
BREW120-MS	5616001	0.5	1.5	9,000	3/8" NPT	HF20-MS	●	●		●	●		●	6
BREW125-MS	5616002	1	1.5	10,000	3/8" NPT	HF25-MS	●	●			●			6
HF160-CLXS	5626005	0.2	1.67 / 3.5	6,300 / 35,000	1/2" NPT	HF60-CLXS	●	●	●	●	●	●	●	1

Coffee / Tea Pot Sizing Guide

Model	1/2 Gal Pots*	Pot Brewers
BREW110-MS	7,000	1 to 3
BREW115-MS	7,000	1 to 3
BREW120-MS	18,000	Up to 5
BREW125-MS	20,000	Up to 5
HF160-CLXS	12,600 / 70,000	Up to 5

* When multiple values present for flow rate and capacity, lower value used for chloramine reduction applications and higher value for chlorine reduction applications.

** As tested and verified by manufacturer's laboratory.

*** Based on testing using *Cryptosporidium parvum* oocysts.

**** Reduction of water-borne bacteria as demonstrated with 99.99% reduction of surrogate organism *E. coli* (ATCC 11229) and *P. fluorescens* (ATCC 49642) in manufacturer's lab test.

See Reverse Osmosis section for additional products for use with coffee applications.

Model No.	Part No.	Micron	Flow Rate (GPM)	Capacity (Gal) @11 gpg hardness*	Connection	Replacement Cartridge	Reduction Claims					Case Qty
							Particulate**	Chlorine, Taste & Odor	Chloramines**	Hardness**	Scale**	
ScaleGard™ Blend Series - WAC Resin with Adjustable Blend												
SGB145-CLS	5636601	1	0.5	530	3/8" NPT	B145-CLS	●	●	●	●	●	1
SGB165-CLS	5636602	1	0.5	749	3/8" NPT	B165-CLS	●	●	●	●	●	1
SGB195-CLS	5636603	1	0.5	1,249	3/8" NPT	B195-CLS	●	●	●	●	●	1
ScaleGard™ Pro Series - WAC Resin with Fixed 25% Blend												
SGP124BN-T	5634801	1	0.5	424	3/8" NPT	P124BN	●	●		●	●	4
SGP165BN-T	5633201	1	1	599	3/8" NPT	P165BN	●	●		●	●	1
SGP195BN-T	5633301	1	1	999	3/8" NPT	P195BN	●	●		●	●	1
ScaleGard™ Blend Series of Heads												
BH3-NPT - 3/8"	6240807	N/A	N/A	N/A	3/8" NPT	N/A						1
ScaleGard™ Blend Series Cartridges												
B145-CLS	5629701	1	0.5	530	N/A	N/A	●	●	●	●	●	1
B165-CLS	5630401	1	0.5	749	N/A	N/A	●	●	●	●	●	1
B195-CLS	5630501	1	0.5	1,249	N/A	N/A	●	●	●	●	●	1

* Gallon capacity determined by inlet water hardness and cartridge resin volume.

** As tested and verified by manufacturer's laboratory.

See Reverse Osmosis section for additional products for use with coffee applications

Espresso (continued)

Model No.	Part No.	Micron	Flow Rate (GPM)	Capacity (Gal) @11 gpg hardness*	Connection	Replacement Cartridge	Reduction Claims					Case Qty
							Particulate**	Chlorine, Taste & Odor	Chloramines**	Hardness**	Scale**	
ScaleGard™ Pro Series Cartridges												
P124BN	5633801	1	0.5	424	N/A	N/A	●	●		●	●	4
P145BN-CL	5630801	1	0.5	424	N/A	N/A	●	●	●	●	●	1
P165BN	5633001	1	1	599	N/A	N/A	●	●		●	●	1
P165BN-CL	5630901	1	0.5	599	N/A	N/A	●	●	●	●	●	1
P195BN	5633101	1	1	999	N/A	N/A	●	●		●	●	1
P195BN-CL	5631001	1	0.5	999	N/A	N/A	●	●	●	●	●	1
ESP Series Softening Cartridge - No Blend												
PS124	5633802	1	0.5	100	N/A	N/A	●	●		●	●	4
PS195	5633104	1	0.5	396	N/A	N/A	●	●		●	●	1

* Gallon capacity determined by inlet water hardness and cartridge resin volume.

** As tested and verified by manufacturer's laboratory.

ScaleGard™ Pro and Blend Series Sizing Guide							
Inlet Hardness (ppm/gpg)	Fixed Blend Capacity (gal)			Adjustable Blend Capacity (gal) for Drip Coffee / Espresso / Steamer-Combis			
	SGP124BN-T	SGP165BN-T	SGP195BN-T	SGB145-CLS	SGB165-CLS	SGB195-CLS	
50 ppm (3 gpg)	1,525	2,157	3,595	3,813 / 3,813 / 1,144	5,393 / 5,393 / 1,618	8,988 / 8,988 / 2,696	
60 ppm (4 gpg)	1,271	1,798	2,996	3,177 / 3,177 / 953	4,494 / 4,494 / 1,348	7,490 / 7,490 / 2,247	
100 ppm (6 gpg)	763	1,079	1,798	1,430 / 1,430 / 572	2,022 / 2,022 / 809	3,370 / 3,370 / 1,348	
140 ppm (8 gpg)	545	770	1,284	817 / 681 / 409	1,156 / 963 / 578	1,926 / 1,605 / 963	
180 ppm (11 gpg)	424	599	999	530 / 454 / 318	749 / 642 / 449	1,248 / 1,070 / 749	
200 ppm (12 gpg)	381	539	899	409 / 409 / 286	578 / 578 / 404	963 / 963 / 674	
240 ppm (14 gpg)	318	449	749	340 / 298 / 238	481 / 421 / 337	802 / 702 / 562	
280 ppm (16 gpg)	272	385	642	255 / 255 / 204	361 / 361 / 289	602 / 602 / 481	
320 ppm (19 gpg)	238	337	562	223 / 223 / 179	316 / 316 / 253	527 / 527 / 421	
360 ppm (21 gpg)	212	300	499	199 / 177 / 159	281 / 250 / 225	468 / 416 / 374	
400 ppm (23 gpg)	191	270	449	159 / 159 / 143	225 / 225 / 202	374 / 374 / 337	

Blending capacity estimates vary by application needs (typical blend setting for application) - see product manual for additional detail

See Reverse Osmosis section for additional products for use with espresso applications

Cold Beverage

Model No.	Part No.	Micron	Flow Rate (GPM)*	Capacity (Gal)*	Connection	Replacement Cartridge	Carbonators	Reduction Claims							Case Qty
								Particulate	Chlorine, Taste & Odor	Chloramines	Cyst**	Scale**	Bacteria***	Microplastics	
BEV120-I	5616017	0.2	1.67	14,000	3/8" NPT	HF20-I	1	●	●		●		●	●	6
BEV140	5616201	0.2	2.5	25,000	3/8" NPT	HF40		●	●		●		●	●	2
BEV145	5616202	3	2.1	25,000	3/8" NPT	HF45		●	●						2
BEV160	5616301	0.2	3.34	35,000	1/2" NPT	HF60	2	●	●		●		●	●	1
HF160-CLX	5626004	0.2	1.67 / 3.5	6,300 / 35,000	1/2" NPT	HF60-CLX		●	●	●	●		●	●	1
BEV165	5616302	3	3.34	35,000	1/2" NPT	HF65		●	●						1
HF165-CLX	5626006	5	1 / 3.5	35,000	1/2" NPT	HF65-CLX		●	●	●					1
BEV190	5616401	0.2	5	54,000	1/2" NPT	HF90	3	●	●		●		●	●	1
BEV195	5616402	3	5	54,000	1/2" NPT	HF95		●	●						1
HF195-CLX	5625804	5	1.5 / 5	54,000	1/2" NPT	HF95-CLX		●	●	●					1
HF265-CLX	5624507	5	2.1 / 7	70,000	3/4" NPT	(2) HF65-CLX	4	●	●	●					1
HF295-CLX	5627503	5	3.1 / 10	108,000	3/4" NPT	(2) HF95-CLX		●	●	●					1
HF395-CLX	5624704	5	4.5 / 15	162,000	3/4" NPT	(3) HF95-CLX		●	●	●					1
HFP-398-CLX-PL	5639501	5	4.5 / 15	225,000	3/4" NPT	(3) HF98-CLX and (1) HF90-SR		●	●	●					1

* When multiple values present for flow rate and capacity, lower value used for chloramine reduction applications and higher value for chlorine reduction applications.

** As tested and verified by manufacturer's laboratory.

*** Based on testing using *Cryptosporidium parvum* oocysts.

**** Reduction of water-borne bacteria as demonstrated with 99.99% reduction of surrogate organism E. coli (ATCC 11229) and P. fluorescens (ATCC 49642) in manufacturer's lab test.

Drinking Water

Model No.	Part No.	Micron	Flow Rate (GPM)	Capacity (Gal)	Connection	Replacement Cartridge	Reduction Claims					Case Qty
							Particulate	Chlorine, Taste & Odor	Cyst*	Lead	Microplastics	
DWS160-L	5627201	0.2	2.5	6,000	3/8" NPT	160-L	●	●	●	●	●	1
160-L	5613444	0.2	2.5	6,000	N/A	N/A	●	●	●	●	●	1

* Based on testing using *Cryptosporidium parvum* oocysts.

** As tested and verified by manufacturer's laboratory.

Multi-Equipment

Multi-equipment filtration system is a single, central, compact system for combination applications that include ice, coffee, tea and cold beverage, including FCB and post mix.

Model No.	Part No.	Micron	Flow Rate (GPM)****	Capacity (Gal)****	Connection	Replacement Cartridge	Reduction Claims						Case Qty	
							Particulate	Chlorine, Taste & Odor	Chloramines	Cyst*	Scale**	Bacteria**		Microplastics
Dual Port Systems with one inlet and two outlet ports (both with carbon filtered water)														
DP190	5624301	0.2	5	54,000	3/4" NPT	DP190 CARTPAK	●	●		●	●	●	●	1
DP260	5625501	0.2	6.68	70,000	3/4" NPT	DP260 CARTPAK	●	●		●	●	●	●	1
DP290	5624201	0.2	10	108,000	3/4" NPT	DP290 CARTPAK	●	●		●	●	●	●	1
DP295-CLX	5624206	5	3.0 / 10.0	108,000	3/4" NPT	DP295-CLX CARTPAK	●	●	●		●			1
DP390	5624102	0.2	15	162,000	3/4" NPT	DP390 CARTPAK	●	●		●	●	●	●	1
DPP System with one inlet and three outlet ports (two with carbon filtered water and other carbonless)														
DPP398-CLX-PL	5639301	0.2	4.5 / 15	225,000	3/4" NPT	DPP398-CLX-PL CARTPAK	●	●	●		●		●	1
Dual Flow Systems with one inlet and two outlet ports (one with carbon filtered water and other carbonless)														
DF290-CLX	5623603	0.2	3.34 / 10	28,000 / 70,000	3/4" NPT	DF290-CLX CARTPAK	●	●	●	●	●	●	●	1
Dual Flow Systems with two inlet and two outlet ports (one with carbon filtered water and other carbonless)														
DIDF260-CLX	5627603	0.2	3.34 / 7	12,600 / 70,000	3/4" NPT	DIDF260-CLX CARTPAK	●	●	●	●	●	●	●	1
DIDF265-CLX	5627604	5	2.0 / 7	70,000	3/4" NPT	DIDF265-CLX CARTPAK	●	●	●		●			1
Dual Flow Systems with two inlet and three outlet ports (two with carbon filtered water and other carbonless)														
DF260-CLX	5627003	0.2	3.34 / 7	12,600 / 70,000	3/4" NPT	DF260-CLX CARTPAK	●	●	●	●	●	●	●	1
DF265-CLX	5627004	5	2.0 / 7	70,000	3/4" NPT	DF265-CLX CARTPAK	●	●	●		●			1



* Based on testing using *Cryptosporidium parvum* oocysts.
 ** As tested and verified by manufacturer's laboratory.
 *** Reduction of water-borne bacteria as demonstrated with 99.99% reduction of surrogate organism E. coli (ATCC 11229) and P. fluorescens (ATCC 49642) in manufacturer's lab test.
 **** When multiple values present for flow rate and capacity, lower value used for chloramine reduction applications and higher value for chlorine reduction applications.
 For sizing help contact your local sales representative

Multi-Equipment (continued)

Model No.	Part No.	Micron	Flow Rate (GPM)****	Capacity (Gal)****	Connection	Replacement Cartridge	Reduction Claims							Case Qty	Price / Ea.
							Particulate	Chlorine, Taste & Odor	Chloramines	Cyst	Scale**	Bacteria**	Microplastics		
DP190 CARTPAK	5613801	0.2	5	54,000	N/A	(1) HF90 (1) HF8-S	•	•		•	•	•	•	1	\$696.08
DP260 CARTPAK	5613814	0.2	6.68	70,000	N/A	(2) HF60 (1) HF8-S	•	•		•	•	•	•	1	\$932.59
DP290 CARTPAK	5613802	0.2	10	108,000	N/A	(2) HF90 (1) HF8-S	•	•		•	•	•	•	1	\$1,272.71
DP295-CLX CARTPAK	5613830	5	3.0 / 10.0	108,000	N/A	(2) HF95-CLX (1) HF8-S	•	•	•		•			1	\$1,307.13
DP390 CARTPAK	5613803	0.2	15	162,000	N/A	(3) HF90 (1) HF8-S	•	•		•	•	•	•	1	\$1,849.38
DPP398-CLX-PL CARTPAK	5613836	0.2	4.5 / 15	225,000	N/A	(3) HF98-CLX (1) HF90-SR (2) HF8-S	•	•	•	•	•	•	•	1	\$3,152.93
DF290-CLX CARTPAK	5613833	0.2	3.34 / 10	28,000 / 70,000	N/A	(2) HF90-CLX (1) HF90-S-SR5	•	•	•	•	•	•	•	1	\$1,892.84
DIDF260-CLX CARTPAK	5613834	0.2	3.34 / 7	12,600 / 70,000	N/A	(2) HF60-CLX (1) HF60-S-SR5	•	•	•	•	•	•	•	1	\$1,417.05
DIDF265-CLX CARTPAK	5613835	5	2.0 / 7	70,000	N/A	(2) HF65-CLX (1) HF65-S-SR5	•	•	•		•			1	\$1,105.06
DF260-CLX CARTPAK	5613831	0.2	3.34 / 7	12,600 / 70,000	N/A	(2) HF60-CLX (1) HF60-S-SR5 (1) HF8-S	•	•	•	•	•	•	•	1	\$1,527.45
DF265-CLX CARTPAK	5613832	5	2.0 / 7	70,000	N/A	(2) HF65-CLX (1) HF65-S-SR5 (1) HF8-S	•	•	•		•			1	\$1,215.92

* Based on testing using *Cryptosporidium parvum* oocysts.

** As tested and verified by manufacturer's laboratory.

*** Reduction of water-borne bacteria as demonstrated with 99.99% reduction of surrogate organism E. coli (ATCC 11229) and P. fluorescens (ATCC 49642) in manufacturer's lab test.

**** When multiple values present for flow rate and capacity, lower value used for chloramine reduction applications and higher value for chlorine reduction applications

For sizing help contact your local sales representative

Reverse Osmosis

Model No.	Part No.	Capacity (GPD)*	Pump Type	Tank Included	Features	Replacement Cartridge	Applications				Case Qty	
							Coffee	Espresso	Combi Oven	Steam		
FSTM075	5612306	75	N/A	2.5 Gal	Auto-Shut Off Valve	Prefilter (5570613) & CFS M 28				●	1	
SGLP-075 RO	5612304	75	Mechanical Permeate	2.5 Gal		Prefilter (5570613) & CFS M 29				●	1	
SGLP200-CL	5636202	200	Mechanical Permeate	3 Gal		HF65-CLX & (2) CFS M (5625004)				●	●	1
SGLP200-CL-BP	5636203	200	Mechanical Permeate	3 Gal	Automatic Bypass	HF65-CLX & (2) CFS M (5625004)				●	●	1
SGLP2-BL	6230002	300	Mechanical Permeate	2.5 Gal	Automatic Bypass, Blending	(2) SGLP2-Dual M & HF37	●	●	●	●	●	1
TFS450 RO	5623901	300	Mechanical Permeate	N/A	Automatic Bypass, Blending, TDS Monitor	TFS450 CARTPAK (HF90, HF95, & (2) CFS M)	●	●	●	●	●	1
ScaleGard HP - 110V	5629101	930 - 1040	Electrical Booster	N/A	Automatic Bypass, Blending, TDS Monitor	HF90-CLX-RO & HFRO500	●	●	●	●	●	1

* Estimated capacity with blending valve closed, 77 deg F water temp. Actual capacity varies with blend setting, incoming water pressure, temperature, and other factors. For sizing help contact your local sales representative

Storage Tanks

Model No.*	Part No.	Height	Diameter	Description	Case Qty
RO Tank - 2.5 GAL Metal	5598405	14-3/4"	9-1/16"	2.5 gallon drawdown tank with installation kit, PRV; Connects to 1/4" tubing	1
RO Tank - 3 GAL Metal (Wall Mount)	5598412	22"	12"	3 gallon drawdown tank with installation kit, PRV; Connects to 1/2" tubing, w/wall mounting bracket	1
RO Tank - 5 GAL Metal	5598406	16-1/2"	15"	5 gallon drawdown tank with installation kit, PRV; Connects to 3/8" or 1/2" tubing	1
RO Tank - 10 GAL FRP	5598407	34"	16-1/2"	10 gallon drawdown tank with installation kit, PRV; Connects to 3/8" or 1/2" tubing	1
RO Tank - 20 GAL FRP	5598408	36-1/2"	21-1/2"	20 gallon drawdown tank with installation kit, PRV; Connects to 3/8" or 1/2" tubing	1
RO Tank - 20 GAL Metal	56-1517161	37-1/2"	21"	20 gallon drawdown tank with installation kit, PRV; Connects to 3/8" tubing	1
RO Tank - 40 GAL FRP	5598409	52"	24-1/4"	40 gallon drawdown tank with installation kit, PRV; Connects to 3/8" or 1/2" tubing	1

* Tank gallon size reflects water storage capacity at 60 psi.

Reverse Osmosis (continued)

Reverse Osmosis Replacement Cartridges & Kits

Model No.	Part No.	For Use in System	Type	Qty Required	Description	Case Qty
SGLP-075 Prefilter	5570613	FSTM075 & SGLP-075 RO	Cartridge	1	Prefilter for SGLP-075 and FSTM075	4
CFS M 28 (FSTM-075)	5598728		Membrane	1	RO membrane for FSTM075 - Includes red flow control	4
CFS M 29 (SGLP-RO)	5598729		Membrane	1	RO membrane for SGLP-075 RO	4
Autobypass Kit - SGLP	50-94201	SGLP200	Kit	1	Cleaning bypass assembly - used for ovens and steamers	1
HF65-CLX	5637213		Cartridge	1	Prefilter cartridge for SGLP200	1
CFS M	5625004		Membrane	2	RO membrane cartridge (CFS M)	16
HF37	5632302	SGLP2-BL	Cartridge	1	Prefilter	4
SGLP2-Dual M	66-931601		Membrane	2	RO membrane cartridge (SGLP2-Dual M)	16
TFS450 Install Kit	50-91301	TFS450	Kit	1	Install kit - TFS450	1
TFS450 CARTPAK	5624801		Cartpak	1	Prefilter (HF95), Postfilter (HF90), & 2 RO cartridges (CFS M)	1
HF95	5613507		Cartridge	1	Prefilter	1
HF90	5613503		Cartridge	1	Postfilter	1
CFS M	5625004		Membrane	2	RO membrane cartridge (CFS M)	16
ScaleGard HP - Kit	6841441	Scalegard HP	Kit	1	Install kit - Scalegard HP	1
HF90-CLX-RO	5637308		Cartridge	1	Prefilter cartridge for Scalegard HP	1
HFRO-500	5626903		Membrane	1	RO membrane	1
SGHP-PRE-EXP	6235205		Head	1	Prefilter expansion manifold	1
SGHP-RO-EXP	6232705		Head	1	Post RO membrane expansion manifold	1

Calcite Feeder

Model No.	Part No.	Description	Connection	Replacement Cartridge	Applications				Case Qty
					Coffee	Espresso	Combi Oven	Steam	
HF125-C	5639701	TDS adjustment - neutralize low pH water	3/4" NPT	HF25-C	●	●	●	●	1
HF25-C	5632204	TDS adjustment - neutralize low pH water	N/A	N/A	●	●	●	●	1

Steamers & Steam Tables

Model No.	Part No.	Micron	Flow Rate (GPM)	Capacity (Gal)	Connection	Replacement Cartridge	Reduction Claims			Case Qty
							Particulate	Chlorine, Taste & Odor	Scale*	
SF165	5624601	3	3.34	35,000	3/4" NPT	SF165 CARTPAK	●	●	●	1
SF165 CARTPAK	5613811	3	3.34	35,000	3/4" NPT		●	●	●	1

* As tested and verified by manufacturer's laboratory.

Water Treatment

Model No.	Part No.	System Type	Flow Rate (GPM)	Connection	Resin Volume (Cu. Ft.)	Maximum Capacity	Description	Case Qty
CFSM1254	CFSM1254	Water Softener	9	1" NPT	2.5	56,800 Grains	Reduces water hardness	1
CFS201BWF	5600203	Automatic Backwash	7	1" NPT	2	N/A	Reduction claims dependent on media used	1

Water Treatment Media

Model No.	Part No.	Size	For Use in - System Type	Description	Case Qty
A-050P	A-050P	1/2 cu ft Pail	Backwashing (CBF)	Activated Carbon - Chlorine, Taste & Odor reduction	1
N-050P	N-050P	1/2 cu ft Pail	Backwashing (CBF)	Acid Neutralization	1

Heads, Manifolds, & Flush Kits

Model No.	Part No.	Description	Case Qty
ScaleGard™ Blend Series of Heads			
BH3-NPT - 3/8"	6240807	3/8" FNPT, Valve-in-Head, with Blend Adjustment	1
High Flow Series, Valve-in-Head			
VH3 (A3) - 3/8 NPT-Shroud-Gauge	6213001	3/8" FNPT, Valve-in-Head, with Shroud & Gauge	12
VH3 (A3) - 3/8 NPT-Shroud-Plug	6213003	3/8" FNPT, Valve-in-Head, with Shroud & Plug	12
VH3 (A3) - 3/8 NPT	6213009	3/8" FNPT, Valve-in-Head	12
High Flow Series, 5 gpm Head			
NH3 (A3) 1/2-NPT w/Gauge	6214413	1/2" FNPT with Gauge	12
NH3 (A3) 1/2-NPT w/Plug	6214417	1/2" FNPT with Plug	12
NH3 (A3) 1/2-NPT	6214415	1/2" FNPT	12
Manifold Heads - Single Outlet			
SF1XX	6228601	3/4" FNPT, Single Head with Scale Feeder Head	1
1XX	6228605	3/4" MNPT, Single Head	1
2XX	6228505	3/4" MNPT, Twin Head, Parallel Flow	1
3XX	6228405	3/4" MNPT, Triple Head, Parallel Flow	1
DP (Dual Port)			
DP1XX	6228603	3/4" MNPT, Single Head, Dual Outlets with Scale Feeder Head	1
DP2XX	6228503	3/4" MNPT, Twin Head, Dual Outlets with Scale Feeder Head	1
DP3XX	6228403	3/4" MNPT, Triple Head, Dual Outlets with Scale Feeder Head	1
DPP-398 Manifold	6243204	3/4" MNPT, Quad Head, Triple Outlets with 2 Scale Feeder Heads	1

Heads, Manifolds, & Flush Kits (continued)

Model No.	Part No.	Description	Case Qty
DF (Dual Flow)			
DF1XX	6228501	3/4" MNPT, Twin Head, Dual Outlets with Separate Water Flow to Carbon (Cold Beverage) and Carbonless (Ice) Filtration	1
DF2XX	6228401	3/4" MNPT, Triple Head, Dual Outlets with Separate Water Flow to Carbon (Cold Beverage) and Carbonless (Ice) Filtration	1
DIDF (Dual Inlet Dual Flow)			
DIDF1XX	6228515	1/2" Barb, Twin Head, Dual Inlet, Dual Outlet with Separate Water Flow	1
DF260-CL-CC Manifold	6236502	3/4" MNPT, Triple Head, Dual Inlet, Triple Outlet with Separate Water Flow and Scale Feeder Head	1
Manifold Expansion Head			
SH-EXP (Expansion Head)	6235201	Add-on Modular Manifold Expansion Head	1
Scalegard HP RO			
SGHP-PRE-EXP	6235205	Scalegard HP Expansion Head - Prefilter	1
SGHP-RO-EXP	6232705	Scalegard HP Expansion Head - RO	1
Flush Valve Kits			
Flush Kit - Ball Valve/Tee - 3/8 NPT	6216505	Flush Valve Kit - VH3 - 3/8" NPT Connections	1
Flush Kit - Ball Valve/Tee - 1/2 NPT	6216503	Flush Valve Kit - NH3 - 1/2" NPT Connections	1
Flush Kit - 3/4 NPT	5606502	Flush Valve Kit - Manifold - 3/4" NPT Connections	1
Flush Valve w/Connection, 3 Way	55-12002	Flush Valve Kit - 3-Way - 3/8" (x2) and 1/4" (x1) JG Connections	1

Drop-In Style Filtration

Model No.	Part No.	Housing Type	Head Style	Cartridge Height	Cartridge Diameter	Connection	Cartridge	Case Qty
CFS11S	5558803	Opaque - Blue	Non-Valved	9-3/4"	Standard - 2.5"	3/4" FNPT	Drop-in cartridges not included	4
CFS11T	5558802	Transparent	Non-Valved	9-3/4"	Standard - 2.5"	3/4" FNPT		4
CFS01S	5557503	Opaque - Blue	Valved	9-3/4"	Standard - 2.5"	3/4" FNPT		4
CFS01T	5557506	Transparent	Valved	9-3/4"	Standard - 2.5"	3/4" FNPT		4
CFS12T	5558902	Transparent	Non-Valved	19-1/2"	Standard - 2.5"	3/4" FNPT		2
CFS02S	5557609	Opaque - Blue	Valved	19-1/2"	Standard - 2.5"	3/4" FNPT		2
CFS02T	5557610	Transparent	Valved	19-1/2"	Standard - 2.5"	3/4" FNPT		2
CFS22B-1.0	5639206	Opaque - Blue	Non-Valved	20"	Large - 4.5"	1" FNPT		2
CFS22B-1.5	5639205	Opaque - Blue	Non-Valved	20"	Large - 4.5"	1-1/2" FNPT		2

Drop-In Replacement Cartridges

Model No.	Part No.	Micron	Cartridge Height	Cartridge Diameter	For Use in System	Reduction Claims			Case Qty
						Particulate	Chlorine, Taste & Odor	Scale*	
CFS110	5612111	5	9-3/4"	Standard - 2.5"	CFS11S, CFS11T, CFS01S, CFS01T	●			24
CFS117	5559307	5	9-3/4"	Standard - 2.5"		●			24
CFS117-S	5559414	5	9-3/4"	Standard - 2.5"		●	●		24
CFS420IMF	5560905	5	9-3/4"	Standard - 2.5"		●		●	24
CFS110-C20	5621201	5	19-1/2"	Standard - 2.5"	CFS02S, CFS02T	●			15
CFS017S-C20	5559415	5	19-1/2"	Standard - 2.5"		●	●		15
CFS210-2	5618907	5	20"	Large - 4.5"	CFS22B-1.0, CFS22B-1.5	●			4
CFS215-2	5589807	5	20"	Large - 4.5"		●	●		4

* As tested and verified by manufacturer's laboratory.

Office Water & Coffee (OCS)

Model No.	Part No.	Micron	Flow Rate (GPM)	Capacity (Gal)	Connection	Replacement Cartridge	Reduction Claims						Case Qty
							Particulate	Chlorine, Taste & Odor	Cyst*	Scale**	Lead	Microplastics	
Office Water Systems													
VH3/OWS120-L	5609243	0.5	0.6	1,200	3/8" JG	OWS120-L	●	●	●		●	●	12
VH3/CC350	5626205	0.5	1	3,500	3/8" JG	CC350	●	●	●			●	6
Office Water Cartridges													
OWS120-L	47-924302	0.5	0.6	1,200	N/A	N/A	●	●	●		●	●	12
CS-52	5553629	5	0.5	1,500	N/A	N/A	●	●					12
CC351	5626107	1	1	3,500	N/A	N/A	●	●					6
CC350	5626104	0.5	1	3,500	N/A	N/A	●	●	●			●	6
Office Water Cartridges - Competitive Retrofit													
CS-15	5631509	1	1	2,500	N/A	N/A	●	●					12
CS-25	5631511	0.5	1	2,000	N/A	N/A	●	●	●				12
Office Coffee Systems													
VH3/HC351-S	5626210	1	1	3,500	3/8" JG	HC351-S	●	●		●			6
Office Coffee Cartridges													
HC081-S	47-225803	1	0.5	800	N/A	N/A	●	●		●			12
CS-51	5553631	5	0.5	1,500	N/A	N/A	●	●		●			12
HC255-HS	5632113	5	1	2,500	N/A	N/A	●	●		●			12
HC251-HS	5626102	1	1	2,500	N/A	N/A	●	●		●			8
HC351-S	5626109	1	1	3,500	N/A	N/A	●	●		●			6
Office Coffee Cartridges - In-Line													
CS-341	5560216	5	0.5	1,500	1/4" JG	N/A	●	●		●			12
OC205-S	5628206	5	0.75	2,000	1/4" JG	N/A	●	●		●			30
Office Coffee Cartridges - Competitive Retrofit													
CS-14	5631508	1	1	2,500	N/A	Competitor filter models include: OCS2, BH2, 2CB-GW	●	●		●			12
CS-14-HS	5631502	0.5	1	3,500	N/A		●	●		●			12
CS-24	5631510	0.5	1	2,000	N/A		●	●	●	●			12

Office Water & Coffee Heads

Model No.	Part No.	Description	Case Qty
VH3 (A3) - 3/8 JG	52-180024	3/8" JG, Valve-in-Head	12
VH3 (A3) - 3/8 NPT	6213033	3/8" FNPT, Valve-in-Head	12

* Based on testing using *Cryptosporidium parvum* oocysts.

** As tested and verified by manufacturer's laboratory.

Replacement Cartridges for Discontinued 8000 Series Systems

Model No.	Part No.	Micron	Flow Rate (GPM)	Capacity (Gal)	For Use in System	Reduction Claims					Case Qty
						Particulate	Chlorine, Taste & Odor	Cyst**	Scale*	Hardness	
8000 Series Cartridges - Cold Beverage Applications											
CFS8112	5581705	1	1.5	10,000	Use with 8000 Series heads and manifolds	●	●				12
CFS8112EL	5581725	1	1.67	12,600		●	●				4
CFS8720	5631905	5	1.5	4,800		●	●				12
CFS8812ELX	5601105	0.5	1.67	14,000		●	●	●			4
CFS8812X	5601101	0.5	1.5	9,000		●	●	●			12
8000 Series Cartridges - Ice and Coffee Applications											
CFS8110-S	5572003	5	1.5	N/A	Use with 8000 Series heads and manifolds	●			●		4
CFS8112-S	5581708	1	1.5	10,000		●	●		●		12
CFS8112EL-S	5581727	1	1.67	12,600		●	●		●		4
CFS8720-S	5631904	5	1.5	4,800		●	●		●		12
CFS8812X-S	5601103	0.5	1.5	9,000		●	●	●	●		12
CFS8812ELX-S	5601107	0.5	1.67	14,000		●	●	●	●		4
8000 Series Cartridges - Scale Reduction and Softening											
CFS8000-S	5560017	N/A	1.5	N/A	Use with 8000 Series heads and manifolds				●		6
SWC1350	5634201	5	0.5	1,350 grain		●			●	●	4
SWC1350-C	5634301	5	0.5	1,100 grain		●	●		●	●	4

* Based on testing using *Cryptosporidium parvum* oocysts.

** As tested and verified by manufacturer's laboratory.

Competitive Retrofit Cartridges

Model No.	Part No.	Micron	Flow Rate (GPM)	Capacity (Gal)	For Use in System	Reduction Claims				Case Qty
						Particulate	Chlorine, Taste & Odor	Cyst*	Scale**	
9000 Series Cartridges - Cold Beverage Applications										
CFS9720	5631603	5	1.5	4,800	Competitor filter models: MC/MC2, XC/XC2, 2FC/4FC/7FC, 2FC5/4FC5/7FC5, OCS2, 7CLM/XCLM	●	●			12
CFS9112	5631605	1	1.5	10,000		●	●			12
CFS9112EL	5631701	1	1.67	12,600		●	●			4
CFS9812X	5631608	0.5	1.5	9,000		●	●	●		12
CFS9812ELX	5631709	0.5	1.67	14,000		●	●	●		4
9000 Series Cartridges - Ice and Coffee Applications										
CFS9110-S	5631621	5	1.5	N/A	Competitor filter models: 4FC5-S/7FC5-S, BH2, MH2	●			●	4
CFS9720-S	5631602	5	1.5	4,800		●	●		●	12
CFS9720EL-S	5631706	5	1.67	5,500		●	●		●	4
CFS9112-S	5631604	1	1.5	10,000		●	●		●	12
CFS9112EL-S	5631702	1	1.67	12,600		●	●		●	4
CFS9812X-S	5631609	0.5	1.5	9,000		●	●	●	●	12
CFS9812ELX-S	5631710	0.5	1.67	14,000		●	●	●	●	4
CFS9110H-S	5630101	5	2	N/A	Hoshizaki competitive ice machine heads & 4HC-H	●			●	12
CFS9112H-SK	5629901	1	2	21,000		●	●		●	12
9000 Series Cartridges - Scale Reduction										
CFS9005-IMF	5593707	N/A	N/A	N/A	Competitor filter model: SS-IMF				●	12

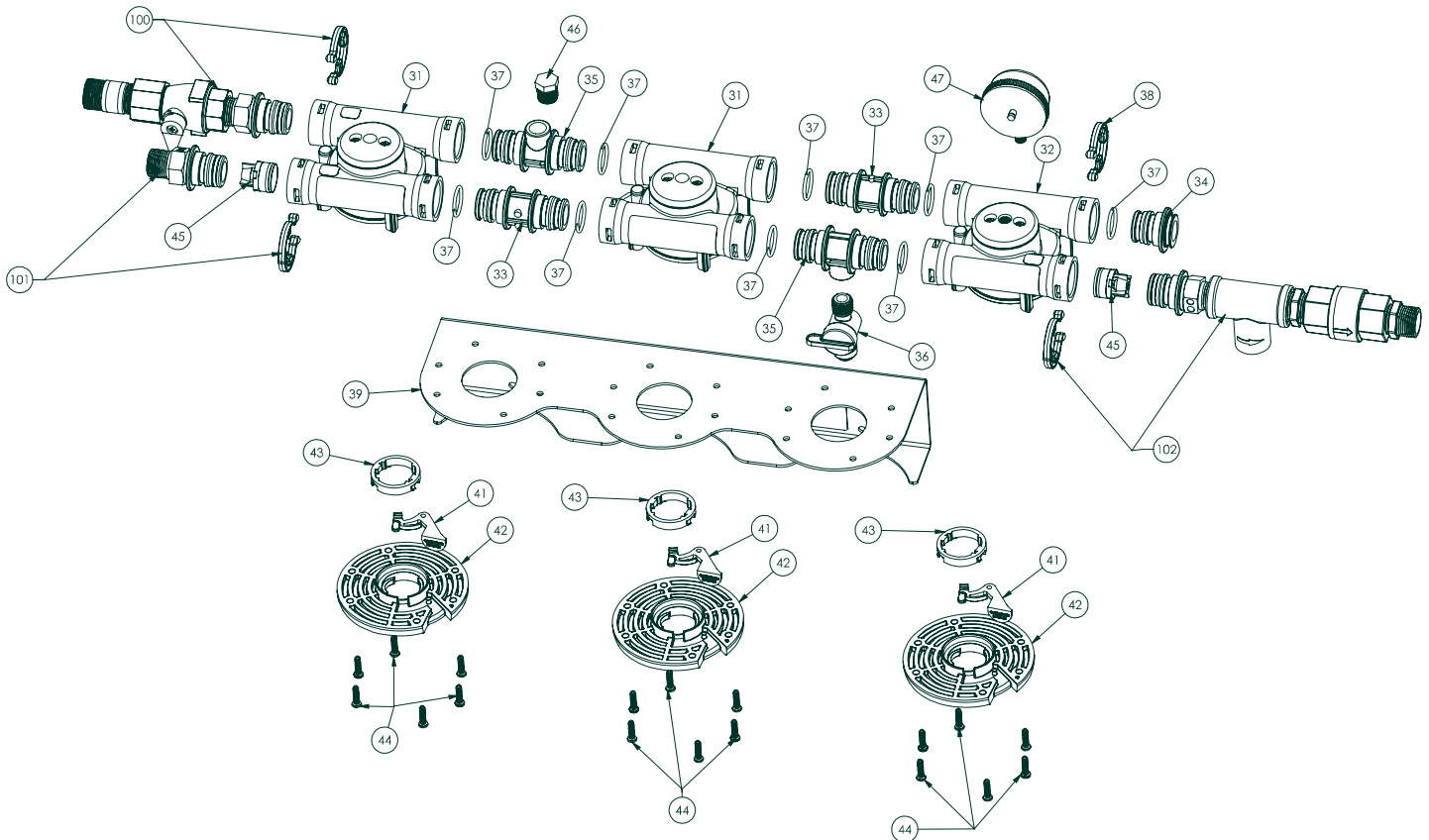
* Based on testing using *Cryptosporidium parvum* oocysts.

** As tested and verified by manufacturer's laboratory.

Spare Parts

High Flow Series Manifold Spare Parts (Example shown is DP3XX manifold)

Model No.	Part No.	Reference #	Description	Case Qty
Connector - Double Ended	50-93734	33	Connector 85-8525, double open ended w/o O-Rings & clip	1
Plug-Head Multi-Port	50-93736	34	Plug 85-8527, w/o O-Ring and clip	1
Connector - Double Ended - 3/8 NPTF	50-93735	35	Connector 85-8526, double open ended with 3/8" NPTF opening	1
Ball Valve - 3/8 JG x NPT	50-93706	36	Ball Valve 60-2333700, 3/8 push-in x NPT	1
O-Ring (EPR) - Manifold	50-93712	37	O-Ring 63597320 for manifold fittings	1
Clip Connector Head - Multi-Port	50-93737	38	Clip connector, 85-8528, Red	1
Cartridge Retainer Kit	5617501	41	Key ring / lever kit	1
Lock Release Lever	50-93730	41	Yellow Locking Lever 85-8466	1
Pressure Gauge 2" - 1/8 NPT	50-93701	47	Pressure Gauge 8500556, 1/8" NPT Male Lower	1
Inlet FTG - Ball Valve - 3/4 NPT	6225005	100	Inlet fitting kit, 3/4" MNPT w/ ball valve, O-Ring & clip	1
Ball Valve - 3/4 FNPT SMC	50-93707	100 alt.	Ball Valve 60-235280, 3/4"FNPT	1
Outlet FTG - 3/4 NPTF	6225006	101	Inlet/Outlet kit, 3/4"MNPT fitting, clip, & O-Ring	1
Connector 3/4 NPTF	50-93732	101	Connector 85-8522, 3/4" Male NPT Adapter w/o O-Ring	1
Outlet FTG - DP Manifold	6225007	102	Outlet fitting w SS head for HF8-S, checkvalve and 3/4" MNPT	1
Outlet FTG - To Coffee	6225009	102 alt.	Outlet fitting w SS head for HF8-S	1
Check Valve	50-93709	102 alt.	Check Valve 60-5651114	1
Bypass Plug - NEP	6217403		NEP Bypass Plug w/ O-Ring	25
Adapter Female Kit JG	50-93715		Adapter 6887331, push in female adapter	1
Elbow-Plug In 3/8 x 3/8	50-93720		Elbow 74-3230606, push-in, 3/8" x 3/8"	1
Connector 3/8 NPTF	50-93733		Outlet Connector 85-8523, 3/8" NPT Female	1
Pressure Gauge 2" - 1/4 NPT	50-93726		Pressure Gauge 8500555, 1/4" NPT Male	1

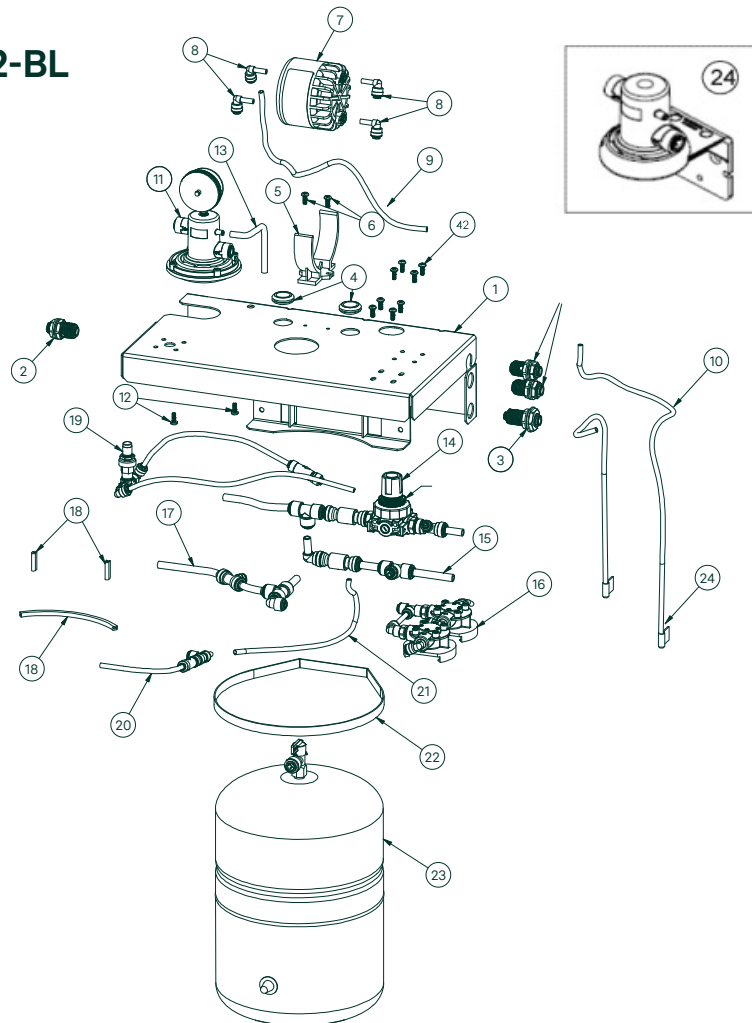


Spare Parts (continued)

Reverse Osmosis Spare Parts (Example shown is SGLP2-BL system)

Model No.	Part No.	Reference #	For use with RO System	Description	Case Qty
Permeate Pump	89-1331202P	7	SGLP-RO, SGLP2-BL, SGLP200, TFS450	Permeate Pump	1
Flow Control - Blue	99-103301P	10	SGLP2-BL, SGLP200, TFS450	Flow Control, Blue	1
NEP (A3) - 3/8 JG - w/plug	6209313	11	SGLP2-BL	Post-Filter Head	12
Regulator ASSY - SGLP2-DUAL RO	6215101	14	SGLP2-BL	Bypass Assembly - Regulator 6216032, Nut, check valve and fittings	1
ROGO Head - Tap 1&2	52-552112P	16	SGLP2-BL, SGLP200, TFS450	Rogo heads	1
Blending ASSY - Kit	6229801	19	SGLP2-BL, TFS450	Blend Valve 60-903501 with fittings and check valve	1
RO Tank - 02.5 GAL	56-161351P	23	FSTM075, SGLP-RO, SGLP2-BL	Tank, 2.5 GAL	1
Tank & Valve ASSY - SGLP2-DUAL RO	6215701	23	FSTM075, SGLP-RO, SGLP2-BL	Tank, 2.5 gal with tank shutoff valve	1
VH3 (A3) - 3/8 JG	52-180009	24	SGLP2-BL	Pre-Filter Head	1
Pressure Relief Valve Kit - SSN	50-91702		SGLP2-BL	Pressure Relief Valve Kit, 3/8"	1
ROGO Head - Tap 1	52-55131		SGLP2-BL	ROGO (Head Front - DUAL; Membrane)	1
ROGO Head - Tap 123	52-5521323P		SGLP2-BL	ROGO Head (Back - BL Membrane)	1

SGLP2-BL



Product List by Model Number

Model No.	Part No.	Legacy ID	SAP ID	Format	Product Group	Case Qty
160-L	5613444	70020302801	7010340328	Cartridge	Foodservice	1
1XX	6228605	70020329507	7100069905	Manifold	Foodservice	1
2XX	6228505	70020229442	7000001833	Manifold	Foodservice	1
3XX	6228405	70020228980	7000001829	Manifold	Foodservice	1
570 Head	6837501	70020002724	7000001602	Head	Foodservice	1
570 Head Manifold	6837503	70020007996	7000001631	Manifold	Foodservice	1
B145-CLS	5629701	UU001529195	7100037445	Cartridge	Foodservice	1
B165-CLS	5630401	UU001527595	7100037015	Cartridge	Foodservice	1
B195-CLS	5630501	UU001528601	7100037444	Cartridge	Foodservice	1
BEV120-I	5616017	70020353465	7100237270	System	Foodservice	6
BEV130	5616101	70020020726	7100008816	System	Foodservice	4
BEV140	5616201	70020044379	7000029269	System	Foodservice	2
BEV145	5616202	70020109537	7000148466	System	Foodservice	2
BEV160	5616301	70020044395	7000125473	System	Foodservice	1
BEV165	5616302	70020109545	7000125605	System	Foodservice	1
BEV190	5616401	70020074947	7000125520	System	Foodservice	1
BEV195	5616402	70020044411	7100009245	System	Foodservice	1
Beverage Plus 2 S	5599705	70020018324	7000050392	Cartridge	Foodservice	4
BH3 - 3/8 JG	6240801	70020333418	7100075200	Head	Foodservice	1
BH3M - 3/8 JG - Local Monitor	6240803	70020333392	7100075198	Head	Foodservice	1
BH3M-NPT - 3/8 JG - Local Monitor	6240809	70020333335	7100075192	Head	Foodservice	1
BH3-NPT - 3/8 JG	6240807	70020333350	7100075194	Head	Foodservice	1
BREW110-MS	5626203	70020324318	7100082519	System	Foodservice	6
BREW115-MS	5626204	70020324326	7100065640	System	Foodservice	6
BREW120-MS	5616001	70020020700	7000125417	System	Foodservice	6
BREW125-MS	5616002	70020020718	7000050415	System	Foodservice	6
BREW125-S	5616007	70020247576	7000144863	System	Foodservice	6
BREW130-MS	5616103	70020020734	7100006944	System	Foodservice	4
CFS M	5625004	70020322767	7100048972	Cartridge	Foodservice	16
CFS M (STM/TSR150)	5598725	70020322692	7100049411	Cartridge	Foodservice	4
CFS M 28 (FSTM-075)	5598728	70020322726	7100068022	Cartridge	Foodservice	4
CFS M 29 (SGLP-RO)	5598729	70020322734	7100048971	Cartridge	Foodservice	4
CFS017S-C20	5559415	70020326776	7100061003	Cartridge	Foodservice	15
CFS01S	5557503	70020115641	7000050812	System	Foodservice	4
CFS01T	5557506	70020143155	7000050971	System	Foodservice	4
CFS02S	5557609	70020015007	7000125376	System	Foodservice	2
CFS02T	5557610	70020143163	7000001769	System	Foodservice	2
CFS110	5612111	70020143957	7000029420	Cartridge	Foodservice	24
CFS110-C20	5621201	70020182468	7100005623	Cartridge	Foodservice	15
CFS117	5559307	70020318609	7100057510	Cartridge	Foodservice	24
CFS117-S	5559414	70020318633	7100058001	Cartridge	Foodservice	24
CFS11S	5558803	70020015072	7000001643	System	Foodservice	4
CFS11T	5558802	70020117084	7000001754	System	Foodservice	4
CFS12T	5558902	70020015130	7000001644	System	Foodservice	2
CFS1610SS	5592015	70020347939	7100180239	System	Foodservice	1
CFS201BWF	5600203	70020006030	7100076690	System	Foodservice	1
CFS210-2	5618907	70020177211	7000029448	Cartridge	Foodservice	4

Product List by Model Number (continued)

Model No.	Part No.	Legacy ID	SAP ID	Format	Product Group	Case Qty
CFS215-2	5589807	70020017425	7000125389	Cartridge	Foodservice	4
CFS217	5578606	70020318849	7010383010	Cartridge	Foodservice	24
CFS22B-1.0	5639206	70020351956	7100217756	System	Foodservice	2
CFS22B-1.5	5639205	70020351949	7100220257	System	Foodservice	2
CFS420IMF	5560905	70020319300	7100040600	Cartridge	Foodservice	24
CFS51701	5560009	70020319953	7100143560	Cartridge	Foodservice	12
CFS717	5560215	70020318963	7100139064	Cartridge	Foodservice	10
CFS8000-S	5560017	70020320324	7100049868	Cartridge	Foodservice	6
CFS8000-SM	5560018	70020320332	7100049869	Cartridge	Foodservice	6
CFS8110-S	5572003	70020015379	7010380720	Cartridge	Foodservice	4
CFS8112	5581705	70020002419	7100000559	Cartridge	Foodservice	12
CFS8112EL	5581725	70020015973	7100000554	Cartridge	Foodservice	4
CFS8112EL-S	5581727	70020015981	7000001649	Cartridge	Foodservice	4
CFS8112EL-S (3 Pack)	5564828	70020015296	7010313765	Cartridge	Foodservice	1
CFS8112-S	5581708	70020007715	7100000561	Cartridge	Foodservice	12
CFS8504-A	5584703	70020105246	7000050733	Cartridge	Foodservice	30
CFS8504-B	5584705	70020105261	7000050734	Cartridge	Foodservice	15
CFS8720	5631905	70020320019	7100043121	Cartridge	Foodservice	12
CFS8720-S	5631904	70020320001	7100043120	Cartridge	Foodservice	12
CFS8812ELX	5601105	70020007913	7000001630	Cartridge	Foodservice	4
CFS8812ELX-S	5601107	70020002658	7000001599	Cartridge	Foodservice	4
CFS8812X	5601101	70020002633	7000001597	Cartridge	Foodservice	12
CFS8812X-S	5601103	70020002641	7000001598	Cartridge	Foodservice	12
CFS9005-IMF	5593707	70020323658	7100042484	Cartridge	Foodservice	12
CFS9110H-S	5630101	70020345057	7010340695	Cartridge	Foodservice	12
CFS9110-S	5631621	70020319490	7010315568	Cartridge	Foodservice	4
CFS9112	5631605	70020319524	7100044900	Cartridge	Foodservice	12
CFS9112EL	5631701	70020319532	7100049907	Cartridge	Foodservice	4
CFS9112EL-S	5631702	70020319540	7100049840	Cartridge	Foodservice	4
CFS9112H-SK	5629901	70020345040	7010383293	Cartridge	Foodservice	12
CFS9112-S	5631604	70020319516	7100045148	Cartridge	Foodservice	12
CFS9118EL-S (3 Pack)	5631711	70020319755	7010315571	Cartridge	Foodservice	1
CFS9720	5631603	70020319847	7100049849	Cartridge	Foodservice	12
CFS9720EL-S	5631706	70020319862	7100049850	Cartridge	Foodservice	4
CFS9720-S	5631602	70020319839	7100049848	Cartridge	Foodservice	12
CFS9812ELX	5631709	70020319730	7100045638	Cartridge	Foodservice	4
CFS9812ELX-S	5631710	70020319748	7100049846	Cartridge	Foodservice	4
CFS9812X	5631608	70020319714	7100046482	Cartridge	Foodservice	12
CFS9812X-S	5631609	70020319722	7100048172	Cartridge	Foodservice	12
CFS-CB10	5612604	70020117100	7010338251	Cartridge	Foodservice	6
CFSM1254	CFSM1254	70020220896	7100014278	System	Foodservice	1
CFSTSD-H	5573305	70020347426	7100180333	System	Foodservice	4
DF1XX	6228501	70020228451	7100163097	Manifold	Foodservice	1
DF260-CL-CC Manifold	6236502	70020318476	7100163123	Manifold	Foodservice	1
DF260-CLX	5627003	70020343607	7100272438	System	Foodservice	1
DF260-CLX CARTPAK	5613831	70020343300	7100271761	Cartpak	Foodservice	1
DF265-CLX	5627004	70071473105	7100272304	System	Foodservice	1

Product List by Model Number (continued)

Model No.	Part No.	Legacy ID	SAP ID	Format	Product Group	Case Qty
DF265-CLX CARTPAK	5613832	70020343375	7100271896	Cartpak	Foodservice	1
DF290-CLX	5623603	70020343433	7100271893	System	Foodservice	1
DF290-CLX CARTPAK	5613833	70020343268	7100271762	Cartpak	Foodservice	1
DF2XX	6228401	70020228444	7100155900	Manifold	Foodservice	1
DIDF1XX	6228515	70020348796	7100179906	Manifold	Foodservice	1
DIDF260-CLX	5627603	70071473121	7100271899	System	Foodservice	1
DIDF260-CLX CARTPAK	5613834	70020343334	7100271897	Cartpak	Foodservice	1
DIDF265-CLX	5627604	70071473139	7100271898	System	Foodservice	1
DIDF265-CLX CARTPAK	5613835	70020343383	7100271904	Cartpak	Foodservice	1
DP190	5624301	70020228097	7000042841	System	Foodservice	1
DP190 CARTPAK	5613801	70020044346	7000029268	Cartpak	Foodservice	1
DP1XX	6228603	70020228139	7000144855	Manifold	Foodservice	1
DP260	5625501	70020259118	7100016320	System	Foodservice	1
DP260 CARTPAK	5613814	70020244912	7100066699	Cartpak	Foodservice	1
DP290	5624201	70020229350	7100007038	System	Foodservice	1
DP290 CARTPAK	5613802	70020044353	7000050525	Cartpak	Foodservice	1
DP295-CLX	5624206	70020343482	7100272439	System	Foodservice	1
DP295-CLX CARTPAK	5613830	70020343326	7100271882	Cartpak	Foodservice	1
DP2XX	6228503	70020229434	7000001832	Manifold	Foodservice	1
DP390	5624102	70020228402	7100007041	System	Foodservice	1
DP390 CARTPAK	5613803	70020132364	7000125646	Cartpak	Foodservice	1
DP3XX	6228403	70020229426	7000001831	Manifold	Foodservice	1
DPP-398 Manifold	6243204	70020354745	7100285840	Manifold	Foodservice	1
DPP398-CLX-PL	5639301	70020354067	7100279407	System	Foodservice	1
DPP398-CLX-PL CARTPAK	5613836	70020354075	7100279408	Cartpak	Foodservice	1
DWS160-L	5627201	70020302934	7100037914	System	Foodservice	1
Empty Service Cartridge (A3)	5632102	70020319458	7100080393	Cartridge	Foodservice	12
ESP124-T	5634802	UU001540663	7100039085	System	Foodservice	4
FM1500-DWS Head	52-125805	70020320753	7010303335	Head	Foodservice	24
FSTM075	5612306	70020210848	7000125762	System	Foodservice	1
HF05-MS	5609356	70020322403	7100054812	Cartridge	Foodservice	8
HF10-MS	5626111	70020324284	7100041862	Cartridge	Foodservice	6
HF125-C	5639701	70020365444	7100300709	System	Foodservice	6
HF15-MS	5626113	70020324292	7100041863	Cartridge	Foodservice	6
HF160-CLX	5626004	70020344357	7100271895	System	Foodservice	1
HF160-CLXS	5626005	70020344365	7100271894	System	Foodservice	1
HF165-CLX	5626006	70020344373	7100271890	System	Foodservice	1
HF190-SR	5639401	70020353838	7100279837	System	Foodservice	1
HF195-CLX	5625804	70020344340	7100271906	System	Foodservice	1
HF1XX-SR	6243203	70020354588	7100283263	Manifold	Foodservice	1
HF20	5615101	70020020551	7000001672	Cartridge	Foodservice	6
HF20-A020-SR	5636433	70020353036	7100230265	Cartridge	Foodservice	6
HF20-A020-S-SR	5636431	70020352558	7100230303	Cartridge	Foodservice	6
HF20-I	5636428	70020352327	7100233882	Cartridge	Foodservice	6
HF20-MS	5615109	70020020593	7000001674	Cartridge	Foodservice	6
HF20-S	5615103	70020020569	7000125416	Cartridge	Foodservice	6
HF20-SI	5636429	70020352335	7100233868	Cartridge	Foodservice	6

Product List by Model Number (continued)

Model No.	Part No.	Legacy ID	SAP ID	Format	Product Group	Case Qty
HF20-S-SR	5636432	70020353028	7100231505	Cartridge	Foodservice	6
HF25	5615201	70020020619	7000001676	Cartridge	Foodservice	6
HF25-C	5632204	70020365451	7100300708	Cartridge	Foodservice	4
HF25-MS	5615209	70020020635	7000001677	Cartridge	Foodservice	6
HF25-S	5615203	70020020627	7000050414	Cartridge	Foodservice	6
HF25-S-SR	5636411	70020342187	7010413714	Cartridge	Foodservice	6
HF265-CLX	5624507	70020343557	7100271892	System	Foodservice	1
HF27	5632201	70020320217	7100044676	Cartridge	Foodservice	6
HF27-S	5632202	70020320233	7100069906	Cartridge	Foodservice	6
HF295-CLX	5627503	70071473113	7100271905	System	Foodservice	1
HF30	5615105	70020020577	7000001673	Cartridge	Foodservice	4
HF30-MS	5615111	70020020601	7000001675	Cartridge	Foodservice	4
HF30-S	5615107	70020020585	7000050413	Cartridge	Foodservice	4
HF35	5615205	70020043090	7000001705	Cartridge	Foodservice	4
HF35-MS	5615211	70020043108	7000001706	Cartridge	Foodservice	4
HF37	5632302	70020320266	7100049863	Cartridge	Foodservice	4
HF395-CLX	5624704	70020353820	7100271900	System	Foodservice	1
HF40	5613303	70020020114	7000001665	Cartridge	Foodservice	2
HF40-S	5613305	70020121417	7100008238	Cartridge	Foodservice	2
HF40-S-SR	5637115	70020353044	7100231284	Cartridge	Foodservice	2
HF45	5613307	70020302918	7000051728	Cartridge	Foodservice	2
HF45-CLX	5637113	70020343599	7100271891	Cartridge	Foodservice	1
HF45-CLXS	5637116	70020353754	7100271889	Cartridge	Foodservice	1
HF45-S	5613309	70020121425	7000050884	Cartridge	Foodservice	2
HF45-S-SR	5637107	70020342864	7100231285	Cartridge	Foodservice	1
HF60	5613403	70020020122	7000001666	Cartridge	Foodservice	1
HF60-A020-S-SR	5637225	70020352574	7100230264	Cartridge	Foodservice	1
HF60-CLX	5637210	70020342625	7100271883	Cartridge	Foodservice	1
HF60-CLXS	5637211	70020342633	7100271881	Cartridge	Foodservice	1
HF60-S	5613405	70020116706	7000001752	Cartridge	Foodservice	1
HF60-S-SR	5637226	70020353051	7100230268	Cartridge	Foodservice	1
HF60-S-SR5	5637209	70020342617	7100231283	Cartridge	Foodservice	1
HF65	5613407	70020115476	7100006231	Cartridge	Foodservice	1
HF65-CLX	5637213	70020342658	7100271880	Cartridge	Foodservice	1
HF65-CLXS	5637227	70020353762	7100271888	Cartridge	Foodservice	1
HF65-S	5613409	70020020130	7000050410	Cartridge	Foodservice	1
HF65-S-SR	5637207	70020342591	7100231725	Cartridge	Foodservice	1
HF65-S-SR5	5637206	70020342583	7100231274	Cartridge	Foodservice	1
HF8-S	5582113	70020319029	7100051029	Cartridge	Foodservice	10
HF90	5613503	70020020155	7000001667	Cartridge	Foodservice	1
HF90-CLX	5637301	70020342682	7100271759	Cartridge	Foodservice	1
HF90-CLX-RO	5637308	70020342757	7100271760	Cartridge	Foodservice	1
HF90-S	5613505	70020020163	7000042826	Cartridge	Foodservice	1
HF90-SR	5637315	70020352616	7100230266	Cartridge	Foodservice	1
HF90-S-SR	5637309	70020342765	7100231507	Cartridge	Foodservice	1
HF90-S-SR5	5637310	70020342773	7100231506	Cartridge	Foodservice	1
HF95	5613507	70020020171	7000001669	Cartridge	Foodservice	1

Product List by Model Number (continued)

Model No.	Part No.	Legacy ID	SAP ID	Format	Product Group	Case Qty
HF95-CLX	5637311	70020342781	7100271903	Cartridge	Foodservice	1
HF95-CLXS	5637317	70020353770	7100271879	Cartridge	Foodservice	1
HF95-S	5613509	70020121433	7000050885	Cartridge	Foodservice	1
HF95-S-SR	5637307	70020342740	7100231286	Cartridge	Foodservice	1
HF98	5637320	70020353804	7100271885	Cartridge	Foodservice	1
HF98-CLX	5637318	70020353788	7100271887	Cartridge	Foodservice	1
HF98-CLXS	5637319	70020353796	7100271886	Cartridge	Foodservice	1
HF98-S	5637321	70020353812	7100271884	Cartridge	Foodservice	1
HFP-398-CLX-PL	5639501	70020354331	7100280693	System	Foodservice	1
HFP398-CLX-PL CARTPAK	5613837	70020354349	7100280632	Cartpak	Foodservice	1
HFRO-500	5626903	70020274760	7000051420	Cartridge	Foodservice	1
ICE120-A020-S-SR	5616015	70020352590	7100230292	System	Foodservice	6
ICE120-S	5616003	70020128388	7000144833	System	Foodservice	6
ICE120-SI	5616018	70020353473	7100237303	System	Foodservice	6
ICE120-S-SR	5616016	70020353077	7100230304	System	Foodservice	6
ICE125-S	5616004	70020128396	7000125639	System	Foodservice	6
ICE140-S	5616203	70020144054	7000050976	System	Foodservice	2
ICE145-S	5616204	70020044387	7100083120	System	Foodservice	2
ICE160-A020-S-SR	5616335	70020352608	7100230267	System	Foodservice	1
ICE160-S	5616303	70020044403	7100006300	System	Foodservice	1
ICE160-S-SR	5616336	70020353069	7100232991	System	Foodservice	1
ICE165-S	5616304	70020302926	7000125965	System	Foodservice	1
ICE190-S	5616403	70020020742	7100006316	System	Foodservice	1
ICE195-S	5616404	70020044429	7000125474	System	Foodservice	1
ICE260-S	5624503	70020229392	7000051214	System	Foodservice	1
ICE265-S	5624504	70020229400	7000051215	System	Foodservice	1
Manifold ASSY - Multiport	6224301	70020243336	7100073484	Manifold	Foodservice	1
NEP (A3) - 3/8 JG	52-180016	70020211499	7000001815	Head	Foodservice	50
NEP (A3) - 3/8 JG - w/plug	6209313	70020294164	7100039275	Head	Foodservice	12
NH3 (A3) 1/2-NPT	6214415	70020144302	7000001771	Head	Foodservice	12
NH3 (A3) 1/2-NPT w/Gauge	6214413	70020309814	7100030365	Head	Foodservice	12
NH3 (A3) 1/2-NPT w/Plug	6214417	70020144310	7000001772	Head	Foodservice	12
P124BN	5633801	UU001540374	7100038852	Cartridge	Foodservice	4
P145BN-CL	5630801	UU001528510	7100037283	Cartridge	Foodservice	1
P165BN	5633001	UU001540903	7100039087	Cartridge	Foodservice	1
P165BN-CL	5630901	UU001528361	7100038321	Cartridge	Foodservice	1
P195BN	5633101	UU001540341	7100038929	Cartridge	Foodservice	1
P195BN-CL	5631001	UU001529534	7100037448	Cartridge	Foodservice	1
PS124	5633802	UU001540366	7100038851	Cartridge	Foodservice	4
PS195	5633104	UU001545274	7100039345	Cartridge	Foodservice	1
RO Tank - 01.9 GAL	5598412	70020353556	7100238963	Tank	Foodservice	1
RO Tank - 02.5 GAL	5598405	70020017995	7000050388	Tank	Foodservice	1
RO Tank - 02.5 GAL	56-161351P	70201700864	7100198165	Tank	Foodservice	1
RO Tank - 05 GAL	5598406	70020018001	7100079905	Tank	Foodservice	1
RO Tank - 10 GAL FRP	5598407	70020018019	7000050389	Tank	Foodservice	1
RO Tank - 20 GAL FRP	5598408	70020018027	7000029227	Tank	Foodservice	1
RO Tank - 20 GAL Metal	56-1517161	70020170737	7000051074	Tank	Foodservice	1

Product List by Model Number (continued)

Model No.	Part No.	Legacy ID	SAP ID	Format	Product Group	Case Qty
RO Tank - 40 GAL FRP	5598409	70020018035	7000029228	Tank	Foodservice	1
ScaleGard HP - 110V	5629101	70020301092	7000125957	System	Foodservice	1
ScaleGard HP - 110V (No CTG)	6239301	70020301100	7000125958	System	Foodservice	1
Scalegard Plus 2 C	5631301	70020320100	7100044675	Cartridge	Foodservice	4
Scalegard Plus 2 S	5599701	70020018316	7000125400	Cartridge	Foodservice	4
Scalegard Plus 2 T	5631305	70020319391	7100049909	Cartridge	Foodservice	4
Scalegard Plus 2H	5633601	UU001541216	7100039088	Cartridge	Foodservice	4
Scalegard Plus T	5631307	70020319417	7100044674	Cartridge	Foodservice	4
SF165	5624601	70020228113	7000125826	System	Foodservice	1
SF165 CARTPAK	5613811	70020144013	7000125666	Cartpak	Foodservice	1
SF18-S	5607708	70020319110	7100051040	System	Foodservice	6
SF18-S w/Gauge	5607710	70020319136	7010409942	System	Foodservice	6
SF1XX	6228601	70020228121	7000148486	Manifold	Foodservice	1
SGB145-CLS	5636601	UU009073915	7100142537	System	Foodservice	1
SGB165-CLS	5636602	UU009073923	7100142538	System	Foodservice	1
SGB195-CLS	5636603	UU009073931	7100142528	System	Foodservice	1
SGHP-PRE-EXP	6235205	70020315621	7100026509	Manifold	Foodservice	1
SGHP-RO-EXP	6232705	70020315613	7100026508	Manifold	Foodservice	1
SGLP-075 Prefilter	5570613	70020323369	7100057511	Cartridge	Foodservice	4
SGLP2 CARTPAK	5613612	70020263631	7100163108	Cartpak	Foodservice	1
SGLP200-CL	5636202	70020337773	7100093218	System	Foodservice	1
SGLP200-CL-BP	5636203	70020337781	7100093219	System	Foodservice	1
SGLP2-BL	6230001	70020231448	7000051223	System	Foodservice	1
SGLP2-BL-Dual	6230002	70020228642	7000125829	System	Foodservice	1
SGLP2-Dual M	66-931601	70020331750	7100054813	Cartridge	Foodservice	16
SGLP-RO	5612304	70020020031	7000050409	System	Foodservice	1
SGP124BN-T	5634801	UU001540655	7100039084	System	Foodservice	4
SGP165BN-T	5633201	UU001541224	7100039091	System	Foodservice	1
SGP195BN-T	5633301	UU001541232	7100039092	System	Foodservice	1
SH-EXP (Expansion Head)	6235201	70020286095	7100022290	Manifold	Foodservice	1
SHPRE-EXP	6235203	70020287432	7000148493	Manifold	Foodservice	1
SHRO-EXP	6232702	70020287317	7100009336	Manifold	Foodservice	1
STM25-C-CLX	5639801	70020365436	7100300707	System	Foodservice	1
SWC1350	5634201	UU001540697	7100039086	Cartridge	Foodservice	4
SWC1350-C	5634301	UU001540358	7100039080	Cartridge	Foodservice	4
TFS450 CARTPAK	5624801	70020217785	7000029496	Cartpak	Foodservice	1
TFS450 RO	5623901	70020217751	7000029495	System	Foodservice	1
TFS450 RO - w/o HF90 & HF95	5623902	70020217769	7000051197	System	Foodservice	1
VH3 3/8 NPT-Shroud	6213009	70020304039	7000148497	Head	Foodservice	12
VH3 3/8 NPT-Shroud-Gauge	6213001	70020021112	7000148444	Head	Foodservice	12
VH3 3/8 NPT-Shroud-Plug	6213003	70020021120	7000148445	Head	Foodservice	12
CC350	5626104	70020324219	7100041826	Cartridge	OCS	6
CC351	5626107	70020324243	7010381781	Cartridge	OCS	6
CS-14	5631508	70020319581	7100049841	Cartridge	OCS	12
CS-14-HS	5631502	70020319797	7010383037	Cartridge	OCS	12
CS-15	5631509	70020319599	7100049842	Cartridge	OCS	12

Product List by Model Number (continued)

Model No.	Part No.	Legacy ID	SAP ID	Format	Product Group	Case Qty
CS-24	5631510	70020319607	7100049843	Cartridge	OCS	12
CS-25	5631511	70020319615	7100049844	Cartridge	OCS	12
CS-341	5560216	70020318971	7100051445	Cartridge	OCS	12
CS-51	5553631	70020318872	7100051442	Cartridge	OCS	12
CS-52	5553629	70020319060	7100050469	Cartridge	OCS	12
HC081-S	47-225803	70020321520	7010340493	Cartridge	OCS	12
HC251-HS	5626102	70020264381	7000125884	Cartridge	OCS	8
HC255-HS	5632113	70020329739	7100083745	Cartridge	OCS	12
HC351-S	5626109	70020324268	7100041860	Cartridge	OCS	6
OC205-S	5628206	70020324177	7010381678	Cartridge	OCS	30
OWS120-L	47-924302	70020303502	7100025498	Cartridge	OCS	12
VH3 (A3) - 3/8 JG	52-180009	70020042886	7000001703	Head	OCS	1
VH3 (A3) - 3/8 NPT	6213033	70020268283	7100163109	Head	OCS	12
VH3 3/8 JG	52-180024	70020253772	7100138586	Head	OCS	12
VH3/CC350	5626205	70020324334	7100041825	System	OCS	6
VH3/HC351-S	5626210	70020324383	7100119488	System	OCS	6
VH3/OWS120-L	5609243	70020303510	7100049912	System	OCS	12

Product List by Part Number

Part No.	Model No.	Legacy ID	SAP ID	Format	Product Group	Case Qty
5553629	CS-52	70020319060	7100050469	Cartridge	OCS	12
5553631	CS-51	70020318872	7100051442	Cartridge	OCS	12
5557503	CFS01S	70020115641	7000050812	System	Foodservice	4
5557506	CFS01T	70020143155	7000050971	System	Foodservice	4
5557609	CFS02S	70020015007	7000125376	System	Foodservice	2
5557610	CFS02T	70020143163	7000001769	System	Foodservice	2
5558802	CFS11T	70020117084	7000001754	System	Foodservice	4
5558803	CFS11S	70020015072	7000001643	System	Foodservice	4
5558902	CFS12T	70020015130	7000001644	System	Foodservice	2
5559307	CFS117	70020318609	7100057510	Cartridge	Foodservice	24
5559414	CFS117-S	70020318633	7100058001	Cartridge	Foodservice	24
5559415	CFS017S-C20	70020326776	7100061003	Cartridge	Foodservice	15
5560009	CFS51701	70020319953	7100143560	Cartridge	Foodservice	12
5560017	CFS8000-S	70020320324	7100049868	Cartridge	Foodservice	6
5560018	CFS8000-SM	70020320332	7100049869	Cartridge	Foodservice	6
5560215	CFS717	70020318963	7100139064	Cartridge	Foodservice	10
5560216	CS-341	70020318971	7100051445	Cartridge	OCS	12
5560905	CFS420IMF	70020319300	7100040600	Cartridge	Foodservice	24
5564828	CFS8112EL-S (3 Pack)	70020015296	7010313765	Cartridge	Foodservice	1
5570613	SGLP-075 Prefilter	70020323369	7100057511	Cartridge	Foodservice	4
5572003	CFS8110-S	70020015379	7010380720	Cartridge	Foodservice	4
5573305	CFSTSD-H	70020347426	7100180333	System	Foodservice	4
5578606	CFS217	70020318849	7010383010	Cartridge	Foodservice	24
5581705	CFS8112	70020002419	7100000559	Cartridge	Foodservice	12
5581708	CFS8112-S	70020007715	7100000561	Cartridge	Foodservice	12
5581725	CFS8112EL	70020015973	7100000554	Cartridge	Foodservice	4
5581727	CFS8112EL-S	70020015981	7000001649	Cartridge	Foodservice	4
5582113	HF8-S	70020319029	7100051029	Cartridge	Foodservice	10
5584703	CFS8504-A	70020105246	7000050733	Cartridge	Foodservice	30
5584705	CFS8504-B	70020105261	7000050734	Cartridge	Foodservice	15
5589807	CFS215-2	70020017425	7000125389	Cartridge	Foodservice	4
5592015	CFS1610SS	70020347939	7100180239	System	Foodservice	1
5593707	CFS9005-IMF	70020323658	7100042484	Cartridge	Foodservice	12
5598405	RO Tank - 02.5 GAL	70020017995	7000050388	Tank	Foodservice	1
5598406	RO Tank - 05 GAL	70020018001	7100079905	Tank	Foodservice	1
5598407	RO Tank - 10 GAL FRP	70020018019	7000050389	Tank	Foodservice	1
5598408	RO Tank - 20 GAL FRP	70020018027	7000029227	Tank	Foodservice	1
5598409	RO Tank - 40 GAL FRP	70020018035	7000029228	Tank	Foodservice	1
5598412	RO Tank - 01.9 GAL	70020353556	7100238963	Tank	Foodservice	1
5598725	CFS M (STM/TSR150)	70020322692	7100049411	Cartridge	Foodservice	4
5598728	CFS M 28 (FSTM-075)	70020322726	7100068022	Cartridge	Foodservice	4
5598729	CFS M 29 (SGLP-RO)	70020322734	7100048971	Cartridge	Foodservice	4
5599701	Scalgard Plus 2 S	70020018316	7000125400	Cartridge	Foodservice	4
5599705	Beverage Plus 2 S	70020018324	7000050392	Cartridge	Foodservice	4
5600203	CFS201BWF	70020006030	7100076690	System	Foodservice	1
5601101	CFS8812X	70020002633	7000001597	Cartridge	Foodservice	12
5601103	CFS8812X-S	70020002641	7000001598	Cartridge	Foodservice	12

Product List by Part Number (continued)

Part No.	Model No.	Legacy ID	SAP ID	Format	Product Group	Case Qty
5601105	CFS8812ELX	70020007913	7000001630	Cartridge	Foodservice	4
5601107	CFS8812ELX-S	70020002658	7000001599	Cartridge	Foodservice	4
5607708	SF18-S	70020319110	7100051040	System	Foodservice	6
5607710	SF18-S w/Gauge	70020319136	7010409942	System	Foodservice	6
5609243	VH3/OWS120-L	70020303510	7100049912	System	OCS	12
5609356	HF05-MS	70020322403	7100054812	Cartridge	Foodservice	8
5612111	CFS110	70020143957	7000029420	Cartridge	Foodservice	24
5612304	SGLP-RO	70020020031	7000050409	System	Foodservice	1
5612306	FSTM075	70020210848	7000125762	System	Foodservice	1
5612604	CFS-CB10	70020117100	7010338251	Cartridge	Foodservice	6
5613303	HF40	70020020114	7000001665	Cartridge	Foodservice	2
5613305	HF40-S	70020121417	7100008238	Cartridge	Foodservice	2
5613307	HF45	70020302918	7000051728	Cartridge	Foodservice	2
5613309	HF45-S	70020121425	7000050884	Cartridge	Foodservice	2
5613403	HF60	70020020122	7000001666	Cartridge	Foodservice	1
5613405	HF60-S	70020116706	7000001752	Cartridge	Foodservice	1
5613407	HF65	70020115476	7100006231	Cartridge	Foodservice	1
5613409	HF65-S	70020020130	7000050410	Cartridge	Foodservice	1
5613444	160-L	70020302801	7010340328	Cartridge	Foodservice	1
5613503	HF90	70020020155	7000001667	Cartridge	Foodservice	1
5613505	HF90-S	70020020163	7000042826	Cartridge	Foodservice	1
5613507	HF95	70020020171	7000001669	Cartridge	Foodservice	1
5613509	HF95-S	70020121433	7000050885	Cartridge	Foodservice	1
5613612	SGLP2 CARTPAK	70020263631	7100163108	Cartpak	Foodservice	1
5613801	DP190 CARTPAK	70020044346	7000029268	Cartpak	Foodservice	1
5613802	DP290 CARTPAK	70020044353	7000050525	Cartpak	Foodservice	1
5613803	DP390 CARTPAK	70020132364	7000125646	Cartpak	Foodservice	1
5613811	SF165 CARTPAK	70020144013	7000125666	Cartpak	Foodservice	1
5613814	DP260 CARTPAK	70020244912	7100066699	Cartpak	Foodservice	1
5613830	DP295-CLX CARTPAK	70020343326	7100271882	Cartpak	Foodservice	1
5613831	DF260-CLX CARTPAK	70020343300	7100271761	Cartpak	Foodservice	1
5613832	DF265-CLX CARTPAK	70020343375	7100271896	Cartpak	Foodservice	1
5613833	DF290-CLX CARTPAK	70020343268	7100271762	Cartpak	Foodservice	1
5613834	DIDF260-CLX CARTPAK	70020343334	7100271897	Cartpak	Foodservice	1
5613835	DIDF265-CLX CARTPAK	70020343383	7100271904	Cartpak	Foodservice	1
5613836	DPP398-CLX-PL CARTPAK	70020354075	7100279408	Cartpak	Foodservice	1
5613837	HFP398-CLX-PL CARTPAK	70020354349	7100280632	Cartpak	Foodservice	1
5615101	HF20	70020020551	7000001672	Cartridge	Foodservice	6
5615103	HF20-S	70020020569	7000125416	Cartridge	Foodservice	6
5615105	HF30	70020020577	7000001673	Cartridge	Foodservice	4
5615107	HF30-S	70020020585	7000050413	Cartridge	Foodservice	4
5615109	HF20-MS	70020020593	7000001674	Cartridge	Foodservice	6
5615111	HF30-MS	70020020601	7000001675	Cartridge	Foodservice	4
5615201	HF25	70020020619	7000001676	Cartridge	Foodservice	6
5615203	HF25-S	70020020627	7000050414	Cartridge	Foodservice	6
5615205	HF35	70020043090	7000001705	Cartridge	Foodservice	4
5615209	HF25-MS	70020020635	7000001677	Cartridge	Foodservice	6

Product List by Part Number (continued)

Part No.	Model No.	Legacy ID	SAP ID	Format	Product Group	Case Qty
5615211	HF35-MS	70020043108	7000001706	Cartridge	Foodservice	4
5616001	BREW120-MS	70020020700	7000125417	System	Foodservice	6
5616002	BREW125-MS	70020020718	7000050415	System	Foodservice	6
5616003	ICE120-S	70020128388	7000144833	System	Foodservice	6
5616004	ICE125-S	70020128396	7000125639	System	Foodservice	6
5616007	BREW125-S	70020247576	7000144863	System	Foodservice	6
5616015	ICE120-A020-S-SR	70020352590	7100230292	System	Foodservice	6
5616016	ICE120-S-SR	70020353077	7100230304	System	Foodservice	6
5616017	BEV120-I	70020353465	7100237270	System	Foodservice	6
5616018	ICE120-SI	70020353473	7100237303	System	Foodservice	6
5616101	BEV130	70020020726	7100008816	System	Foodservice	4
5616103	BREW130-MS	70020020734	7100006944	System	Foodservice	4
5616201	BEV140	70020044379	7000029269	System	Foodservice	2
5616202	BEV145	70020109537	7000148466	System	Foodservice	2
5616203	ICE140-S	70020144054	7000050976	System	Foodservice	2
5616204	ICE145-S	70020044387	7100083120	System	Foodservice	2
5616301	BEV160	70020044395	7000125473	System	Foodservice	1
5616302	BEV165	70020109545	7000125605	System	Foodservice	1
5616303	ICE160-S	70020044403	7100006300	System	Foodservice	1
5616304	ICE165-S	70020302926	7000125965	System	Foodservice	1
5616335	ICE160-A020-S-SR	70020352608	7100230267	System	Foodservice	1
5616336	ICE160-S-SR	70020353069	7100232991	System	Foodservice	1
5616401	BEV190	70020074947	7000125520	System	Foodservice	1
5616402	BEV195	70020044411	7100009245	System	Foodservice	1
5616403	ICE190-S	70020020742	7100006316	System	Foodservice	1
5616404	ICE195-S	70020044429	7000125474	System	Foodservice	1
5618907	CFS210-2	70020177211	7000029448	Cartridge	Foodservice	4
5621201	CFS110-C20	70020182468	7100005623	Cartridge	Foodservice	15
5623603	DF290-CLX	70020343433	7100271893	System	Foodservice	1
5623901	TFS450 RO	70020217751	7000029495	System	Foodservice	1
5623902	TFS450 RO - w/o HF90 & HF95	70020217769	7000051197	System	Foodservice	1
5624102	DP390	70020228402	7100007041	System	Foodservice	1
5624201	DP290	70020229350	7100007038	System	Foodservice	1
5624206	DP295-CLX	70020343482	7100272439	System	Foodservice	1
5624301	DP190	70020228097	7000042841	System	Foodservice	1
5624503	ICE260-S	70020229392	7000051214	System	Foodservice	1
5624504	ICE265-S	70020229400	7000051215	System	Foodservice	1
5624507	HF265-CLX	70020343557	7100271892	System	Foodservice	1
5624601	SF165	70020228113	7000125826	System	Foodservice	1
5624704	HF395-CLX	70020353820	7100271900	System	Foodservice	1
5624801	TFS450 CARTPAK	70020217785	7000029496	Cartpak	Foodservice	1
5625004	CFS M	70020322767	7100048972	Cartridge	Foodservice	16
5625501	DP260	70020259118	7100016320	System	Foodservice	1
5625804	HF195-CLX	70020344340	7100271906	System	Foodservice	1
5626004	HF160-CLX	70020344357	7100271895	System	Foodservice	1
5626005	HF160-CLXS	70020344365	7100271894	System	Foodservice	1
5626006	HF165-CLX	70020344373	7100271890	System	Foodservice	1

Product List by Part Number (continued)

Part No.	Model No.	Legacy ID	SAP ID	Format	Product Group	Case Qty
5626102	HC251-HS	70020264381	7000125884	Cartridge	OCS	8
5626104	CC350	70020324219	7100041826	Cartridge	OCS	6
5626107	CC351	70020324243	7010381781	Cartridge	OCS	6
5626109	HC351-S	70020324268	7100041860	Cartridge	OCS	6
5626111	HF10-MS	70020324284	7100041862	Cartridge	Foodservice	6
5626113	HF15-MS	70020324292	7100041863	Cartridge	Foodservice	6
5626203	BREW110-MS	70020324318	7100082519	System	Foodservice	6
5626204	BREW115-MS	70020324326	7100065640	System	Foodservice	6
5626205	VH3/CC350	70020324334	7100041825	System	OCS	6
5626210	VH3/HC351-S	70020324383	7100119488	System	OCS	6
5626903	HFRO-500	70020274760	7000051420	Cartridge	Foodservice	1
5627003	DF260-CLX	70020343607	7100272438	System	Foodservice	1
5627004	DF265-CLX	70071473105	7100272304	System	Foodservice	1
5627201	DWS160-L	70020302934	7100037914	System	Foodservice	1
5627503	HF295-CLX	70071473113	7100271905	System	Foodservice	1
5627603	DIDF260-CLX	70071473121	7100271899	System	Foodservice	1
5627604	DIDF265-CLX	70071473139	7100271898	System	Foodservice	1
5628206	OC205-S	70020324177	7010381678	Cartridge	OCS	30
5629101	ScaleGard HP - 110V	70020301092	7000125957	System	Foodservice	1
5629701	B145-CLS	UU001529195	7100037445	Cartridge	Foodservice	1
5629901	CFS9112H-SK	70020345040	7010383293	Cartridge	Foodservice	12
5630101	CFS9110H-S	70020345057	7010340695	Cartridge	Foodservice	12
5630401	B165-CLS	UU001527595	7100037015	Cartridge	Foodservice	1
5630501	B195-CLS	UU001528601	7100037444	Cartridge	Foodservice	1
5630801	P145BN-CL	UU001528510	7100037283	Cartridge	Foodservice	1
5630901	P165BN-CL	UU001528361	7100038321	Cartridge	Foodservice	1
5631001	P195BN-CL	UU001529534	7100037448	Cartridge	Foodservice	1
5631301	Scalegard Plus 2 C	70020320100	7100044675	Cartridge	Foodservice	4
5631305	Scalegard Plus 2 T	70020319391	7100049909	Cartridge	Foodservice	4
5631307	Scalegard Plus T	70020319417	7100044674	Cartridge	Foodservice	4
5631502	CS-14-HS	70020319797	7010383037	Cartridge	OCS	12
5631508	CS-14	70020319581	7100049841	Cartridge	OCS	12
5631509	CS-15	70020319599	7100049842	Cartridge	OCS	12
5631510	CS-24	70020319607	7100049843	Cartridge	OCS	12
5631511	CS-25	70020319615	7100049844	Cartridge	OCS	12
5631602	CFS9720-S	70020319839	7100049848	Cartridge	Foodservice	12
5631603	CFS9720	70020319847	7100049849	Cartridge	Foodservice	12
5631604	CFS9112-S	70020319516	7100045148	Cartridge	Foodservice	12
5631605	CFS9112	70020319524	7100044900	Cartridge	Foodservice	12
5631608	CFS9812X	70020319714	7100046482	Cartridge	Foodservice	12
5631609	CFS9812X-S	70020319722	7100048172	Cartridge	Foodservice	12
5631621	CFS9110-S	70020319490	7010315568	Cartridge	Foodservice	4
5631701	CFS9112EL	70020319532	7100049907	Cartridge	Foodservice	4
5631702	CFS9112EL-S	70020319540	7100049840	Cartridge	Foodservice	4
5631706	CFS9720EL-S	70020319862	7100049850	Cartridge	Foodservice	4
5631709	CFS9812ELX	70020319730	7100045638	Cartridge	Foodservice	4
5631710	CFS9812ELX-S	70020319748	7100049846	Cartridge	Foodservice	4

Product List by Part Number (continued)

Part No.	Model No.	Legacy ID	SAP ID	Format	Product Group	Case Qty
5631711	CFS9118EL-S (3 Pack)	70020319755	7010315571	Cartridge	Foodservice	1
5631904	CFS8720-S	70020320001	7100043120	Cartridge	Foodservice	12
5631905	CFS8720	70020320019	7100043121	Cartridge	Foodservice	12
5632102	Empty Service Cartridge (A3)	70020319458	7100080393	Cartridge	Foodservice	12
5632113	HC255-HS	70020329739	7100083745	Cartridge	OCS	12
5632201	HF27	70020320217	7100044676	Cartridge	Foodservice	6
5632202	HF27-S	70020320233	7100069906	Cartridge	Foodservice	6
5632204	HF25-C	70020365451	7100300708	Cartridge	Foodservice	4
5632302	HF37	70020320266	7100049863	Cartridge	Foodservice	4
5633001	P165BN	UU001540903	7100039087	Cartridge	Foodservice	1
5633101	P195BN	UU001540341	7100038929	Cartridge	Foodservice	1
5633104	PS195	UU001545274	7100039345	Cartridge	Foodservice	1
5633201	SGP165BN-T	UU001541224	7100039091	System	Foodservice	1
5633301	SGP195BN-T	UU001541232	7100039092	System	Foodservice	1
5633601	Scalgard Plus 2H	UU001541216	7100039088	Cartridge	Foodservice	4
5633801	P124BN	UU001540374	7100038852	Cartridge	Foodservice	4
5633802	PS124	UU001540366	7100038851	Cartridge	Foodservice	4
5634201	SWC1350	UU001540697	7100039086	Cartridge	Foodservice	4
5634301	SWC1350-C	UU001540358	7100039080	Cartridge	Foodservice	4
5634801	SGP124BN-T	UU001540655	7100039084	System	Foodservice	4
5634802	ESP124-T	UU001540663	7100039085	System	Foodservice	4
5636202	SGLP200-CL	70020337773	7100093218	System	Foodservice	1
5636203	SGLP200-CL-BP	70020337781	7100093219	System	Foodservice	1
5636411	HF25-S-SR	70020342187	7010413714	Cartridge	Foodservice	6
5636428	HF20-I	70020352327	7100233882	Cartridge	Foodservice	6
5636429	HF20-SI	70020352335	7100233868	Cartridge	Foodservice	6
5636431	HF20-A020-S-SR	70020352558	7100230303	Cartridge	Foodservice	6
5636432	HF20-S-SR	70020353028	7100231505	Cartridge	Foodservice	6
5636433	HF20-A020-SR	70020353036	7100230265	Cartridge	Foodservice	6
5636601	SGB145-CLS	UU009073915	7100142537	System	Foodservice	1
5636602	SGB165-CLS	UU009073923	7100142538	System	Foodservice	1
5636603	SGB195-CLS	UU009073931	7100142528	System	Foodservice	1
5637107	HF45-S-SR	70020342864	7100231285	Cartridge	Foodservice	1
5637113	HF45-CLX	70020343599	7100271891	Cartridge	Foodservice	1
5637115	HF40-S-SR	70020353044	7100231284	Cartridge	Foodservice	2
5637116	HF45-CLXS	70020353754	7100271889	Cartridge	Foodservice	1
5637206	HF65-S-SR5	70020342583	7100231274	Cartridge	Foodservice	1
5637207	HF65-S-SR	70020342591	7100231725	Cartridge	Foodservice	1
5637209	HF60-S-SR5	70020342617	7100231283	Cartridge	Foodservice	1
5637210	HF60-CLX	70020342625	7100271883	Cartridge	Foodservice	1
5637211	HF60-CLXS	70020342633	7100271881	Cartridge	Foodservice	1
5637213	HF65-CLX	70020342658	7100271880	Cartridge	Foodservice	1
5637225	HF60-A020-S-SR	70020352574	7100230264	Cartridge	Foodservice	1
5637226	HF60-S-SR	70020353051	7100230268	Cartridge	Foodservice	1
5637227	HF65-CLXS	70020353762	7100271888	Cartridge	Foodservice	1
5637301	HF90-CLX	70020342682	7100271759	Cartridge	Foodservice	1
5637307	HF95-S-SR	70020342740	7100231286	Cartridge	Foodservice	1

Product List by Part Number (continued)

Part No.	Model No.	Legacy ID	SAP ID	Format	Product Group	Case Qty
5637308	HF90-CLX-RO	70020342757	7100271760	Cartridge	Foodservice	1
5637309	HF90-S-SR	70020342765	7100231507	Cartridge	Foodservice	1
5637310	HF90-S-SR5	70020342773	7100231506	Cartridge	Foodservice	1
5637311	HF95-CLX	70020342781	7100271903	Cartridge	Foodservice	1
5637315	HF90-SR	70020352616	7100230266	Cartridge	Foodservice	1
5637317	HF95-CLXS	70020353770	7100271879	Cartridge	Foodservice	1
5637318	HF98-CLX	70020353788	7100271887	Cartridge	Foodservice	1
5637319	HF98-CLXS	70020353796	7100271886	Cartridge	Foodservice	1
5637320	HF98	70020353804	7100271885	Cartridge	Foodservice	1
5637321	HF98-S	70020353812	7100271884	Cartridge	Foodservice	1
5639205	CFS22B-1.5	70020351949	7100220257	System	Foodservice	2
5639206	CFS22B-1.0	70020351956	7100217756	System	Foodservice	2
5639301	DPP398-CLX-PL	70020354067	7100279407	System	Foodservice	1
5639401	HF190-SR	70020353838	7100279837	System	Foodservice	1
5639501	HFP-398-CLX-PL	70020354331	7100280693	System	Foodservice	1
5639701	HF125-C	70020365444	7100300709	System	Foodservice	6
5639801	STM25-C-CLX	70020365436	7100300707	System	Foodservice	1
6209313	NEP (A3) - 3/8 JG - w/plug	70020294164	7100039275	Head	Foodservice	12
6213001	VH3 3/8 NPT-Shroud-Gauge	70020021112	7000148444	Head	Foodservice	12
6213003	VH3 3/8 NPT-Shroud-Plug	70020021120	7000148445	Head	Foodservice	12
6213009	VH3 3/8 NPT-Shroud	70020304039	7000148497	Head	Foodservice	12
6213033	VH3 (A3) - 3/8 NPT	70020268283	7100163109	Head	OCS	12
6214413	NH3 (A3) 1/2-NPT w/Gauge	70020309814	7100030365	Head	Foodservice	12
6214415	NH3 (A3) 1/2-NPT	70020144302	7000001771	Head	Foodservice	12
6214417	NH3 (A3) 1/2-NPT w/Plug	70020144310	7000001772	Head	Foodservice	12
6224301	Manifold ASSY - Multiport	70020243336	7100073484	Manifold	Foodservice	1
6228401	DF2XX	70020228444	7100155900	Manifold	Foodservice	1
6228403	DP3XX	70020229426	7000001831	Manifold	Foodservice	1
6228405	3XX	70020228980	7000001829	Manifold	Foodservice	1
6228501	DF1XX	70020228451	7100163097	Manifold	Foodservice	1
6228503	DP2XX	70020229434	7000001832	Manifold	Foodservice	1
6228505	2XX	70020229442	7000001833	Manifold	Foodservice	1
6228515	DIDF1XX	70020348796	7100179906	Manifold	Foodservice	1
6228601	SF1XX	70020228121	7000148486	Manifold	Foodservice	1
6228603	DP1XX	70020228139	7000144855	Manifold	Foodservice	1
6228605	1XX	70020329507	7100069905	Manifold	Foodservice	1
6230001	SGLP2-BL	70020231448	7000051223	System	Foodservice	1
6230002	SGLP2-BL-Dual	70020228642	7000125829	System	Foodservice	1
6232702	SHRO-EXP	70020287317	7100009336	Manifold	Foodservice	1
6232705	SGHP-RO-EXP	70020315613	7100026508	Manifold	Foodservice	1
6235201	SH-EXP (Expansion Head)	70020286095	7100022290	Manifold	Foodservice	1
6235203	SHPRE-EXP	70020287432	7000148493	Manifold	Foodservice	1
6235205	SGHP-PRE-EXP	70020315621	7100026509	Manifold	Foodservice	1
6236502	DF260-CL-CC Manifold	70020318476	7100163123	Manifold	Foodservice	1
6239301	ScaleGard HP - 110V (No CTG)	70020301100	7000125958	System	Foodservice	1
6240801	BH3 - 3/8 JG	70020333418	7100075200	Head	Foodservice	1
6240803	BH3M - 3/8 JG - Local Monitor	70020333392	7100075198	Head	Foodservice	1

Product List by Part Number (continued)

Part No.	Model No.	Legacy ID	SAP ID	Format	Product Group	Case Qty
6240807	BH3-NPT - 3/8 JG	70020333350	7100075194	Head	Foodservice	1
6240809	BH3M-NPT - 3/8 JG - Local Monitor	70020333335	7100075192	Head	Foodservice	1
6243203	HF1XX-SR	70020354588	7100283263	Manifold	Foodservice	1
6243204	DPP-398 Manifold	70020354745	7100285840	Manifold	Foodservice	1
6837501	570 Head	70020002724	7000001602	Head	Foodservice	1
6837503	570 Head Manifold	70020007996	7000001631	Manifold	Foodservice	1
47-225803	HC081-S	70020321520	7010340493	Cartridge	OCS	12
47-924302	OWS120-L	70020303502	7100025498	Cartridge	OCS	12
52-125805	FM1500-DWS Head	70020320753	7010303335	Head	Foodservice	24
52-180009	VH3 (A3) - 3/8 JG	70020042886	7000001703	Head	OCS	1
52-180016	NEP (A3) - 3/8 JG	70020211499	7000001815	Head	Foodservice	50
52-180024	VH3 3/8 JG	70020253772	7100138586	Head	OCS	12
56-1517161	RO Tank - 20 GAL Metal	70020170737	7000051074	Tank	Foodservice	1
56-161351P	RO Tank - 02.5 GAL	70201700864	7100198165	Tank	Foodservice	1
66-931601	SGLP2-Dual M	70020331750	7100054813	Cartridge	Foodservice	16
CFSM1254	CFSM1254	70020220896	7100014278	System	Foodservice	1

Product Selection and Use: Many factors can affect whether a Solventum product is appropriate for a particular application and how it performs, including local water and plumbing conditions. Customer is solely responsible for determining whether a Solventum product meets customer's specific application requirements, including testing incoming source water quality and comparing it to the product's capabilities described in the Performance Data Sheet. Failure to properly evaluate, select, use or maintain a Solventum product, or to meet applicable regulations or instructions, may result in personal injury from exposure to contaminants AND/OR property damage due to water leakage or flooding.

Limited Warranty, Limited Remedy, and Disclaimer: Solventum warrants that this product will be free from defects in material and manufacture at the time of purchase. Except as required by law, SOLVENTUM MAKES NO OTHER WARRANTIES OR CONDITIONS, EXPRESS OR IMPLIED, INCLUDING, BUT NOT LIMITED TO, ANY IMPLIED WARRANTY OR CONDITION OF MERCHANTABILITY OR FITNESS FOR A PARTICULAR PURPOSE OR ANY IMPLIED WARRANTY OR CONDITION ARISING OUT OF A COURSE OF DEALING, CUSTOM OR USAGE OF TRADE. This warranty does not cover failures resulting from misuse, alterations, failure to follow instructions or damage not caused by Solventum. This warranty does not cover labor. If the Solventum product does not conform to this warranty, then the sole and exclusive remedy is, at Solventum's option, replacement of the Solventum product or refund of the purchase price.

This warranty gives you specific legal rights, and you may have other rights which may vary from state to state, or country to country. For warranty questions or service, please call 866.990.9785. Proof of purchase must accompany a warranty claim.

Limitation of Liability: Except for the limited remedy stated above, and except to the extent prohibited by law, Solventum will not be liable for any loss or damage arising from or related to the Solventum product, whether direct, indirect, special, incidental, or consequential (including, but not limited to, lost profits or business opportunity), regardless of the legal or equitable theory asserted, including, but not limited to, warranty, contract, negligence, or strict liability.



Solventum
2510 Conway Avenue East
Maplewood, MN 55144
USA
Solventum.com

3M drinking water filtration is now part of Solventum

©Solventum 2025. Solventum, the S logo and ScaleGard are trademarks of Solventum or its affiliates. Other trademarks are the property of their respective owners.